

HiCOZY

USER MANUAL

PET GROOMING KIT
VACUUM CLEANER

S1+



EN

CATALOG

INTRODUCTION	03
WARNING	04
PACKAGE INCLUDES	05
DIAGRAM	06
ACCESSORIES INSTRUCTIONS	08
PREPARATION	09
INSTRUCTIONS	10
MAINTENANCE	14
TROUBLESHOOTING/FAQ	15
RECYCLING	16
SPECIFICATIONS	17
WARRANTY PERIOD	17

INTRODUCTION

Dear HiCOZY user:

Thank you for purchasing the HiCOZY S1+ Pet Grooming Kit & Vacuum Cleaner.

We are so honored to present you the HiCOZY S1+ Pet Grooming Kit & Vacuum Cleaner. This product not only provides high-quality grooming, it also keeps your home fresh!

The included accessories meet all the grooming needs of your furry friends. Cozy Mode will ensure your pet has a more relaxing and comfortable grooming experience. The product can easily vacuum up dust and fur.

This user manual contains the following sections: warning, package includes, instructions, maintenance and more. Each section will serve as a guide as you begin to use the vacuum. Please read the user manual carefully before using this product.

Thank you again for choosing HiCOZY. If you have any questions or concerns regarding our product, please contact us via support@hicozy.com or call our Customer Service number at (866)444-2699.



Please fully read and understand this manual before using and keep this manual for future reference.

WARNING

- This product is designed to be used at home, not in a commercial setting or industrial use. Do not use the vacuum outdoors or in any humid environments.
- Do not allow children to use or play with this product or its accessories.
- Do not allow pets to play with the product.
- Do not touch the power plug or product with wet hands. Do not vacuum wet hairs or any liquids.
- Do not use this product if the power cord is damaged or if the power plug is broken.
- Do not disassemble the product. The incorrect installation may cause electric shock or fires. Please contact HiCOZY if any maintenance is needed.
- Do not vacuum any flammable liquids, such as oil.
- Do not use the product in an environment that could be a potential fire hazard.
- Do not vacuum any items that could be potential fire hazards, such as cigarettes, matches, hot ashes, etc.
- Before replacing any components or performing maintenance, please unplug the power cord first.
- Do not use or store this product outdoors and/or in the bathroom, or any other humid environments.
- Please do not use any aerosol or scented product as the filter, these chemicals are potential safety hazards.
- Please recycle the product according to the local guideline after the product's service life has ended.
- Do not bend the hose violently.

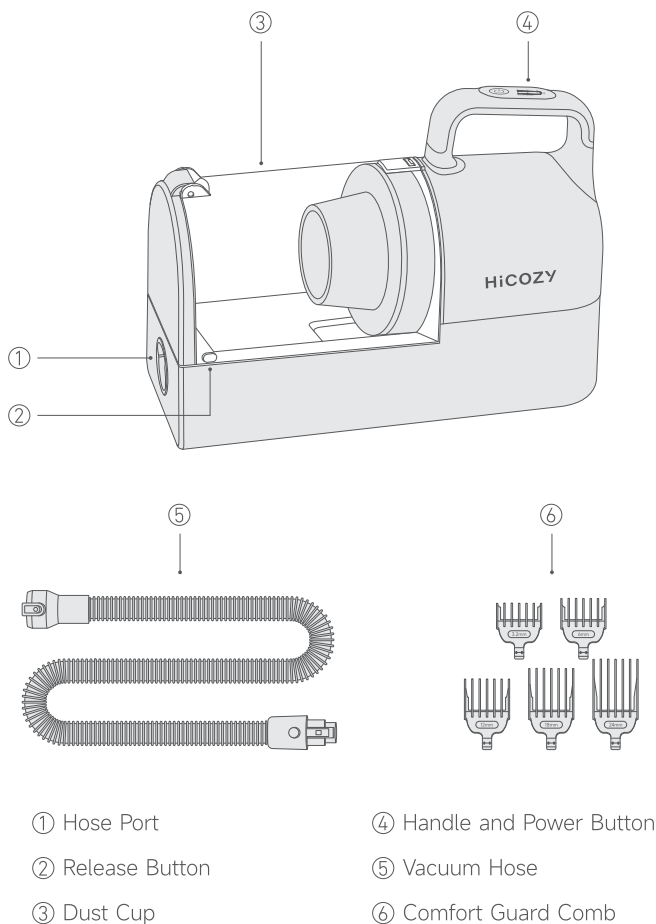
- Regularly clean the dust cup and filter. Otherwise, malfunctions could occur.
- Disconnect the power plug when the product is not in use.

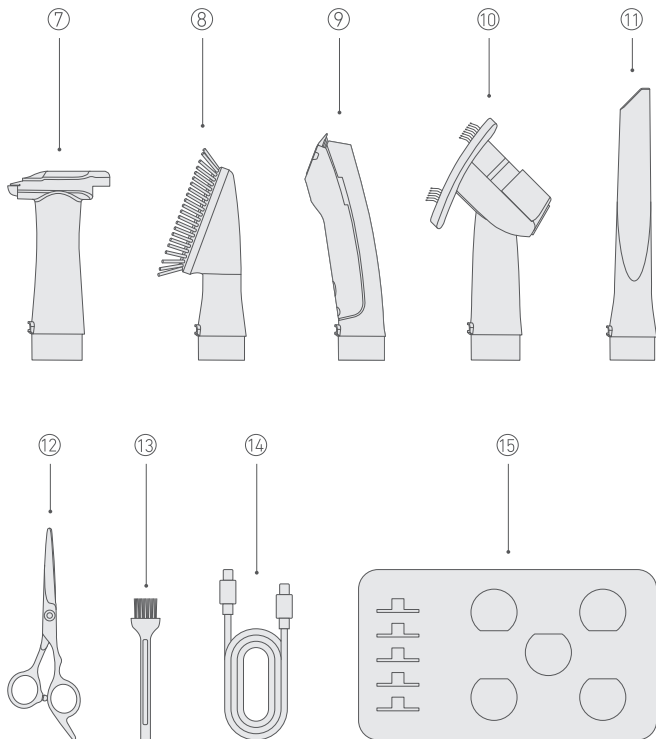
PACKAGE INCLUDES

When you receive this product, please check to ensure the product and all its accessories are included. If you encounter any quality issues or missing items, please contact our customer support team.

VACUUM CLEANER (With HEPA Filter)	× 1
Vacuum Hose	× 1
Hair Clipper	× 1
Stainless Steel Scissors	× 1
Slicker Brush	× 1
Nozzle	× 1
Deshed	× 1
Cleaning Brush	× 1
Comfort Guard Comb	× 5
Type-C Power Cable	× 1
Trimmer Brush	× 1
Storage Plate	× 1
User Manual	× 1
Warranty Card	× 1

DIAGRAM





⑦ Dashed

⑧ Cleaning Brush

⑨ Hair Clipper

⑩ Slicker Brush

⑪ Nozzle

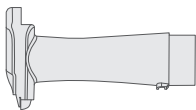
⑫ Stainless Steel Scissors

⑬ Trimmer Brush

⑭ Type-C Power Cable

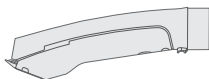
⑮ Storage Plate

ACCESSORIES INSTRUCTIONS



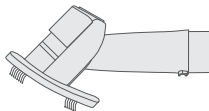
Deshed

Removes fallen hair and smooths hair.



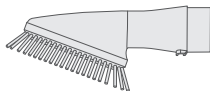
Hair Clipper

Used to trim pet hairs.



Slicker Brush

Reduces tangling hairs and removes the fallen hairs. Smooths hairs.



Cleaning Brush

Remove the hairs on the furniture and clothes.



Nozzle

Daily home vacuum.

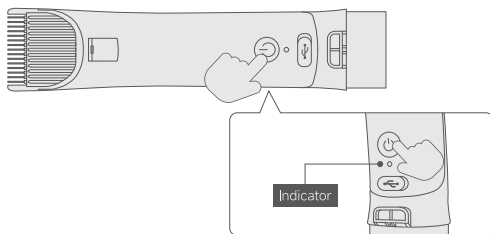


Stainless Steel Scissors

Use it to cut facial or tail hairs.

PREPARATION

- For a better grooming experience, if the white battery indicator flashes slowly after the Hair Clipper is turned on, please promptly charge it.



Illuminated white light

Slowly flashing white light

Rapidly white light flashing

Flashing red light

Illuminated white light (charging)

Working Status

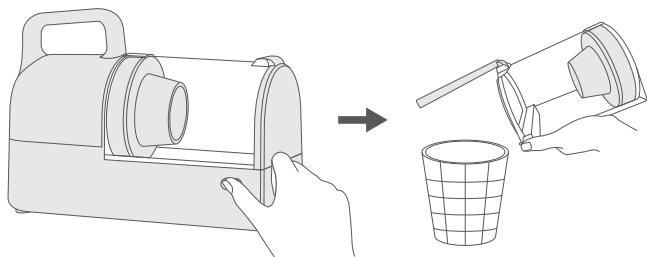
Battery level less than 20%

Battery level less than 10%

Charging

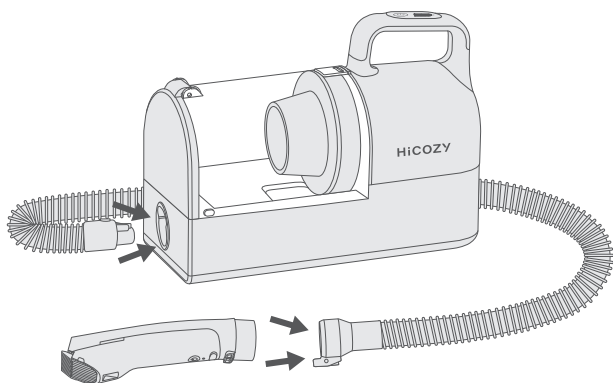
Charging completed

- Check if the dust cup is clean. Empty the dust cup promptly.

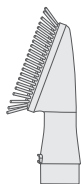


INSTRUCTIONS

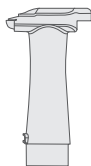
1. Choose suitable accessories according to your grooming needs and assemble them as show below.



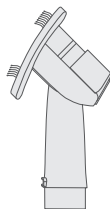
Hair Clipper



Cleaning Brush



Dashed

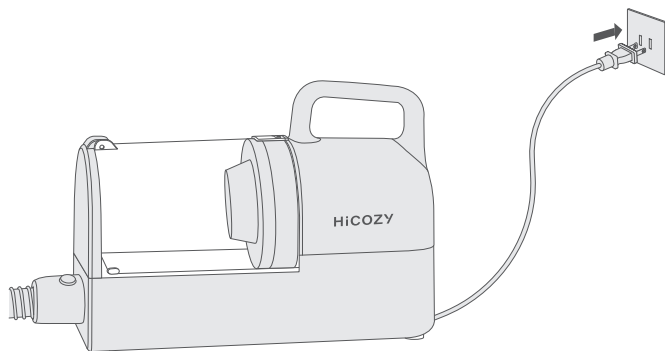


Slicker Brush

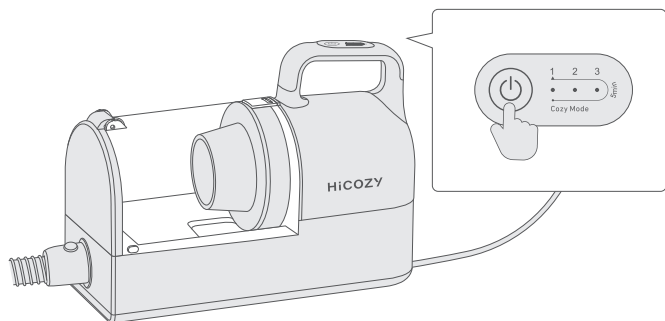


Nozzle

2. Insert the power plug into the AC socket. (Please check if the working voltage matches the local voltage.)



3. Press the Power Button to choose the vacuum model to start the vacuum machine.



Note: If your pet is uncomfortable with the noise level, try switching to the Cozy Mode Option. Then, adjust it to the normal mode if your pet seems to adjust well to the softer noise level.



Cozy Mode



8 Kpa

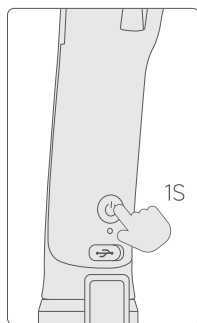
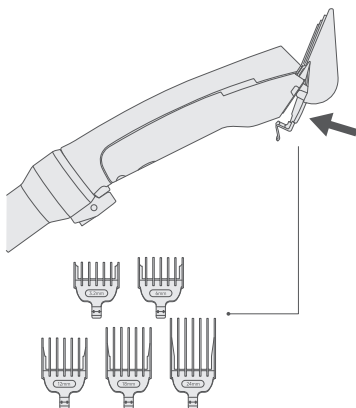


5 Kpa

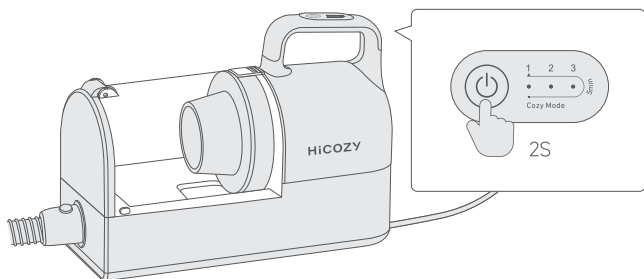


12 Kpa

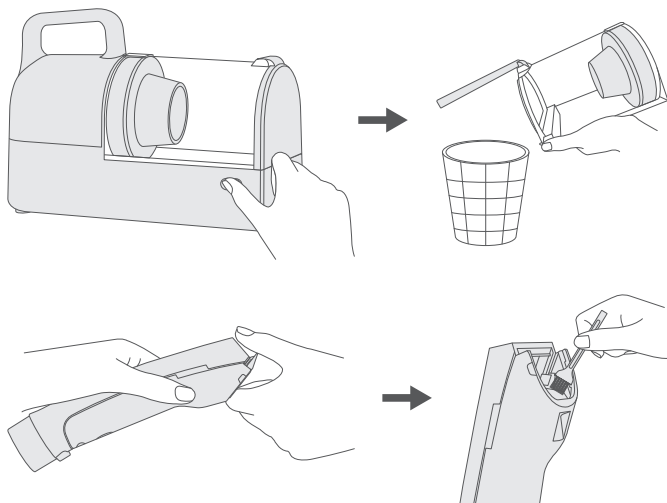
4. Please choose the suitable Comfort Guard Comb (optional), then press and hold the Power Button for one second to begin trimming your pet. You may use the attached scissors to trim any extra hair on the body.



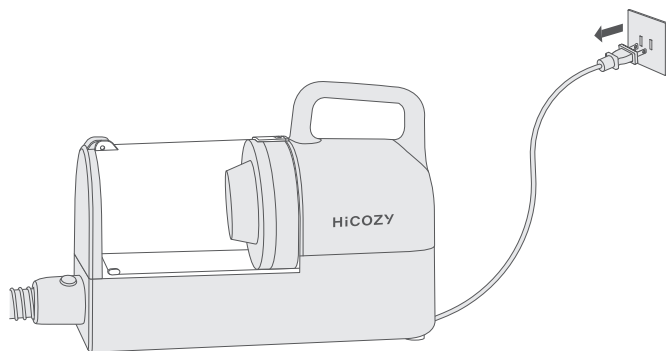
5. Press and hold the Power Button for 2 seconds to pause the vacuuming. Press the Power Button again to continue use.



6. Clean the dust cup and hair clipper immediately after use.



7. Disconnect the power plug; and store the accessories, power cord and hose well.



MAINTENANCE

PRODUCT AND ACCESSORIES MAINTENANCE

Hair Clipper

- Please keep the product at full battery level when the product is not in use. Use the attached Type-C power cable to charge the product. Disconnect the power after it is fully charged.
- The clipper head is detached, so it can be used with the slicker brush and vacuum machine.
- Use the attached cleaning brush to pick up hair after use. Then drop some lubricating oil in the ceramic razor (purchased separately).
- The clipper head is the ceramic razor, it is designed for use with hair only.

HEPA Filter

The HEPA Filter accumulates dust after prolonged use. After disassembling the filter, please use a dust blower or vacuum machine to clean the dust. If the HEPA filter still works poorly after cleaning, please replace it with a new one to avoid potential malfunction.

Slicker Brush

Make sure that the steel needles have no added pressure to them when placed in storage.

Hose

- Make sure the hose is not bent in an extreme position when placed in storage. Keep the hose in its naturally-curl shape.
- The hose is made of soft material. Avoid any contact with sharp items.

TROUBLESHOOTING/FAQ

THE SUCTION POWER OF THE VACUUM APPEARS WEAKENED

Clean the filter and dust cup immediately, and check if the hose is blocked or damaged.

THE FIRST MODE'S SUCTION IS WEAK

That is our Cozy Mode setting, which is designed for pets with sensitivities. It starts out with a low noise, helping your pet adjust to the noise frequency of the vacuum. After a certain amount of time, it will transition to the 1st mode level. This will increase the noise and power of the vacuum.

THE PRODUCT FAILS TO WORK AFTER POWERED

Press the Power Button.

EXPERIENCING DIFFICULTY SHAVING YOUR PET'S FUR

Use the attached cleaning brush to remove the hairs on the clipper, and drip lubricating oil on it. If shaving still seems difficult, please replace the clipper head with another HiCOZY clipper head.

WHY IS THERE IMMENSE RESISTANCE WHEN SHAVING WITH THE ELECTRIC RAZOR

Keep the clipper parallel to the skin. If your pet has thick fur, you may need to go over their hair multiple times.

THE HAIRS ON THE SURFACE ARE UNEVEN AFTER SHAVING

Please use the trimmer to modify the hairs to get the desired result.

INCONVENIENT TO TRIM THE HAIRS ON THE FACE OR OTHER PARTS

Use the scissors to trim the finer areas. Use the nozzle to vacuum any hairs on the ground.

THE PRODUCT STOPS WORKING AFTER A LONG RUNTIME

The motor heats up after a long run. Disconnect the power and let the product cool down for 50 minutes before next use.

RECYCLING

You may dispose of the product when its service life has ended, please recycle the recyclable parts according to local guidelines.

SPECIFICATIONS

Product	PET GROOMING KIT (VACUUM CLEANER)
Model	HS-CW01-B
Working Voltage	AC 120 V 60 Hz
Power Rating	300 W
Maximum Suction	12 Kpa
Noise Range	45 dBA (Cozy Mode)~70 dBA
Hair Clipper Charging Voltage	5 V== 2 A MAX
Hair Clipper Charging Capacity	DC 3.7 V 1600 mAh 5.92 Wh
Dust Cup Capacity	2 L/0.528 Gallon
Hose Length	1.5 M/4.92 Feet
Power Cord Length	3 M/9.84 Feet

WARRANTY PERIOD

1-Year Limited Warranty from HiCOZY

We are devoted to creating the most delicate service for you and your pets!

Each HiCOZY Pet Grooming Kit Vacuum Cleaner will be free from defects in material and workmanship. This warranty does not cover damage from neglect, misuse, contamination, alteration, accident, or abnormal conditions of operation or handling.

This warranty covers the original purchaser only and is not transferable.

HiCOZY

VERSION: 1.1