

HiCOZY

USER MANUAL

ICE MAKER

HIM-D5



VERSION: 1.0

Contents

Introduction	03
Precautions	04
Parts	06
Packing List	08
Technical Specifications	08
Installation Instructions	09
Functions	09
How to Use	11
Cleaning	15
Faults & Troubleshooting	16
Recycling	16
Warranty Period	17
Contact Us	18

Introduction

The HiCOZY Bullet Ice Maker is designed to conveniently produce large quantities of bullet ice for cooling and retaining freshness of food and drinks. It fits right in at any kitchen, living room, bar, banquet, etc.

Please read and follow all the instructions in this manual before operating the ice maker. Keep this manual for future reference.

Thank you again for choosing HiCOZY.

If you have any questions or concerns regarding your product, please contact us at **1-866-444-2699** or **support@hicozy.com**.

Please read and understand the manual thoroughly before using the ice maker and keep it for reference.



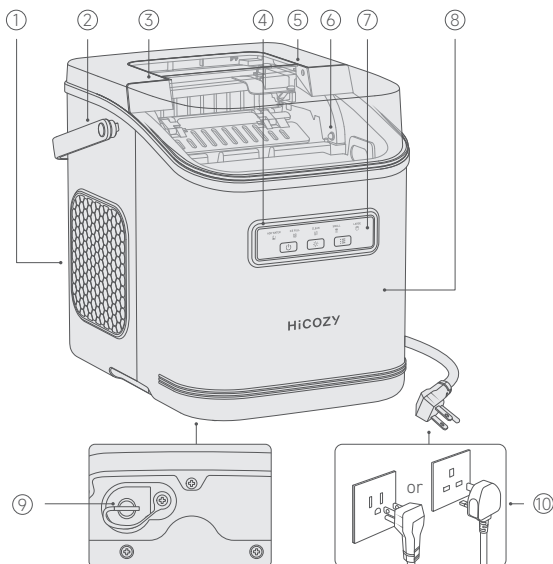
Warning: Risk of fire/flammable materials.

Precautions

- Add cold water between 32°F and 68°F (0°C and 20°C) to the water tank upon startup to produce higher-quality ice faster.
- To maintain the ice's fresh taste, please use it shortly after it is produced. Otherwise, it will melt.
- During the ice making process, the ice will be submerged in water, resulting in surface moisture.
- Please only add safe drinking water in the ice maker. Using unsafe or non-treated water is hazardous for your health.
- Do not use hot water above 86°F (30°C) in the ice maker.
- Before use, ensure your home power outlet's voltage matches the value on the product nameplate. Power supply voltage misalignment can cause serious damage to the ice maker.
- Please ground the ice maker correctly. Use an extension socket with a grounding plug, and make sure the rated power of socket is higher than 1,000W.
- Reserve 4" (10.2cm) of clearance around the ice maker to ensure good cooling.
- Do not dismantle, modify or replace any part of the ice maker.
- When using the ice maker for the first time, please keep it still for at least 4 hours prior to operation; this ensures the compressor is safe to use. After the ice maker is relocated, keep it still for another 4 hours.

- Before use, clean the new ice maker by referring to the "Cleaning" section.
- Do not put the ice maker upside down; doing so may damage the compressor and refrigeration system.
- Do not immerse any part of the ice maker in water, or plug/unplug the power socket with wet hands.
- Do not touch the ice-making parts while the ice maker is running, touching it may result in frostbite.
- Please avoid turning it on and off too frequently, as this can lead to excessive wear on the compressor, reducing its lifespan.
- Do not use the ice maker outdoors, or in hot or corrosive places.
- The ice maker must be placed on a flat, dry, and bump-proof area.
- Do not tilt the ice maker more than 45° during transportation or operation.
- The ice maker should not be used by children or people without the requisite knowledge to operate it unless properly supervised by a qualified individual.
- When the ice maker is unused for a long time, drain the residual water in the water tank and wipe the ice maker out with a clean towel. Then, place it in a dry and ventilated place.

Parts



① Air Inlet

② Handle

③ Upper Cover

④ Panel Aperture

⑤ Ambient Light

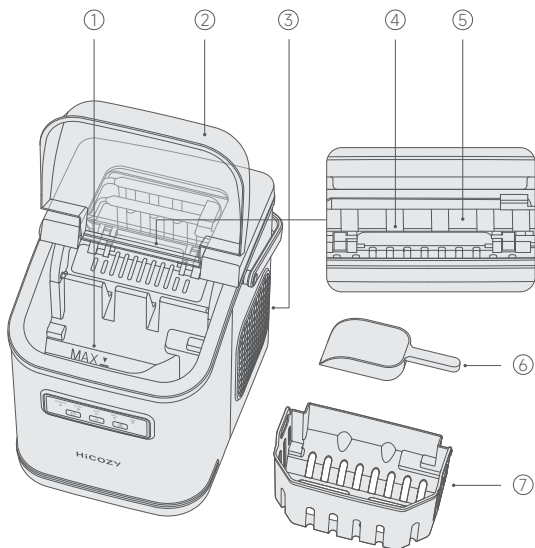
⑥ Infrared Sensor

⑦ Control Panel

⑧ Water Tank

⑨ Water Drain Plug

⑩ Power Cord



- ① MAX Water Level
- ② Transparent Top Lid
- ③ Dissipation Hole
- ④ Ice Making Device

- ⑤ Ice Making Box
- ⑥ Ice Scraper
- ⑦ Ice Basket

Packing List

Ice Maker	× 1	Manual	× 1
Ice Scraper	× 1	After-Sales Card	× 1

Technical Specifications

Ice-Making Time	6-10 Minutes
Ice Basket Capacity	1.3lbs (600g)
Water Tank Capacity	47.3oz (1,400ml)
Working Voltage	AC 115V/60Hz/1.5A (US/CA/MX) AC 220-240V/50Hz/0.8A (UK/AE)
Power Consumption	110W
Weight	13lbs (5.9kg) ± 5%
Dimensions	8.7L x 11.4W x 11.2H in (22 × 29 × 28.5cm)
Refrigerant/Refrigerant Amount	R600a/0.6oz (17g) (US/CA/MX) R600a/0.5oz (15g) (UK/AE)

Installation Instructions

1. Remove the package and take out all of the accessories.
2. Put the ice maker vertically on a flat table.
3. Wipe the water tank, ice basket and ice scraper with a clean towel.
4. When using the ice maker for the very first time, keep it still for 4h before turning it on.

Functions

Buttons & Indicators



Press the Start Button to make ice, press the button again to stop making ice.



Mode function:

Click it to switch between the big ice and small ice making modes.

Clean function:

While in standby status, press and hold the button for 3s to start cleaning; press the mode button to cancel cleaning.

Note: The ice maker cannot enter the self-cleaning mode while it is producing ice. Pause it first to start the cleaning mode.



Light Button

Press to turn the ambient lighting and panel aperture on or off.

ADD WATER



Water Shortage

When the tank's water level is too low, the water shortage indicator will flicker; the aperture's blue indicator will also flicker.

ICE FULL



Full Ice

When the ice basket is full, the full ice indicator and the white aperture indicator will illuminate.

LARGE



Big Ice Mode

When the big ice mode is selected, this indicator and the blue aperture indicator will illuminate.

SMALL



Small Ice Mode

When the small ice mode is selected, this indicator and the blue aperture indicator will illuminate.

CLEAN



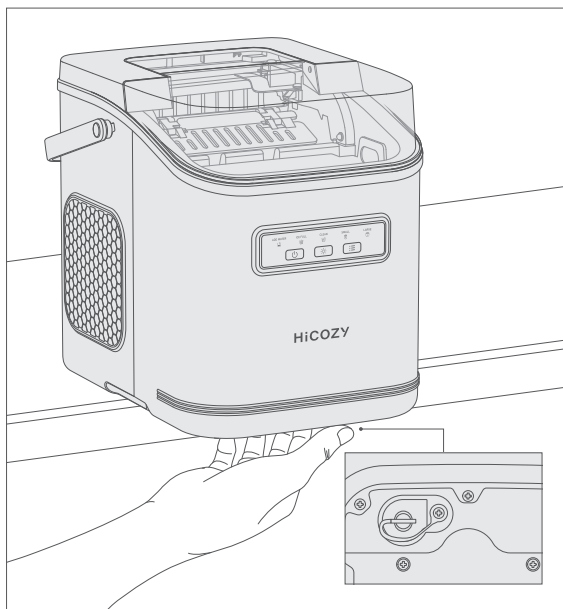
Clean Mode

When clean mode is selected, this indicator will illuminate while the white aperture flickers.

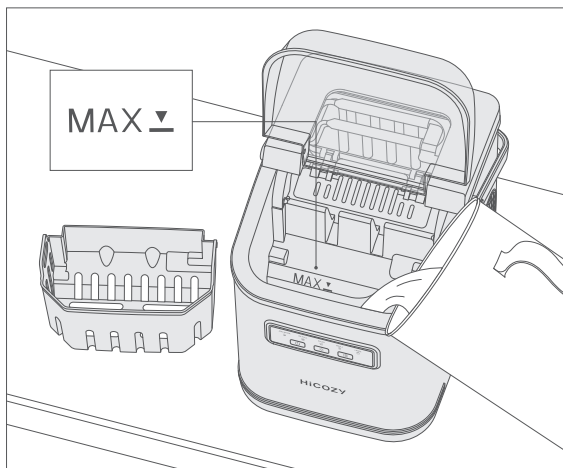
How to Use

Water Filling

1. Keep the ice maker still for over 4h before using it for the very first time.
2. Block the water drain hole with a water drain plug.



3. Take out the ice basket and slowly pour 47.3oz of (1,400mL) clean drinking water into the water tank (do not exceed the MAX water level).



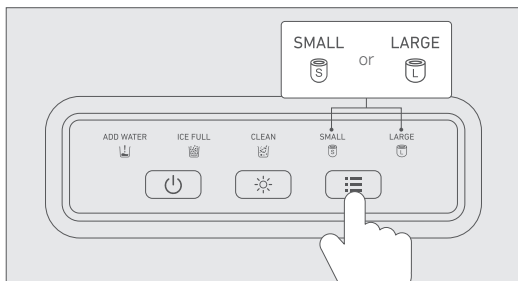
Power-On

- Check whether the voltage for household use matches that on the product nameplate.
- After connecting to the power supply, all indicator lights will flash for 1 second and then go out.

Note: Do not turn on the power supply using wet hands. Always keep the plug dry.

Start Ice Making

1. Press the Power Button to start ice making.
2. Press the Mode Button to select big ice or small ice as required.

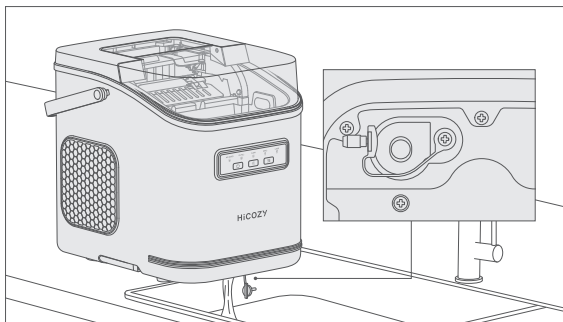


Note:

- When using the ice maker for the first time, or when using it for the first time in a long time, clean the ice maker per the “Cleaning” section.
- The ice making cycle is about 6-10 minutes, which may vary based on the ice cube size, ambient temperature, and water temperature.
- The ice may be smaller than usual for the first few cycles of ice making; this is because the machine’s internals have not yet completely cooled down. This is a normal phenomenon across all ice makers.
- The ice maker will stop running when the ice basket is full. The ice maker will make more ice when the level has fallen below the maximum level.

Drainage

1. Unplug the ice maker before attempting water drainage.
2. Move the ice maker to a place where a water receiving device (such as water slot) is installed below the ice maker (**note:** The ice maker should be placed in a stable position to avoid falling).
3. Remove the water drain plug to drain the residual water out of the water tank into the desired receptacle.



4. After the water tank is drained, insert the water drain plug, and clean the residual water with a clean towel.
5. Put the ice maker back.

It is suggested to drain water from the ice maker under the following conditions:

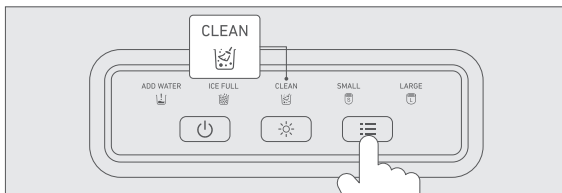
- Always use fresh drinking water for ice making. Any residual water left after making ice should be promptly drained.
- When the ice maker is idle for long period.

Cleaning

- It is advised to clean the ice maker at least once a week, this keeps the ice cubes fresh and the ice maker hygienic.
- Take out the ice basket, and add an appropriate mixture of water and citric acid in the water tank. Please refer to the citric acid instructions for specific measurements. This ice maker does not include citric acid.

Note: Do not use organic solvents, boiled water, strong acids, or strong alkalis to clean the ice maker.

1. Press and hold the Mode Button for 3 seconds while in standby mode. After 3 seconds, the cleaning indicator will illuminate and the ice maker will enter cleaning mode. Then, it will stop automatically in approximately 5 min (you can press the Mode Button during operation to stop the ice maker manually).



2. After the ice maker is stopped, remove the water drain plug to drain the wastewater. Then, insert the water drain plug.
3. Fill with clean drinking water again. Then, enter cleaning mode and repeat the cleaning process 2~4 more times. This is to ensure there's no residual detergent.

Note: The ice maker's interior should have no contact with water to avoid hazards. Do not use solvents or chemicals to clean the plastic parts.

Faults & Troubleshooting

Ice making failure.

- Check whether the ice maker is powered on correctly.
- Ensure the water tank has enough water.
- Ensure the compressor is working.

Water leakage.

- Do not exceed the MAX water level when filling water.
- Ensure the water drain plug is on tight.

Water tank has water, but ice is not being made.

- Check whether the water tank filter is blocked.
- Check whether the compressor is working.

The ice basket is not full, but the panel shows "full ice".

The sensor above the ice basket may be blocked; clean the surrounding area promptly.

Recycling

This ice maker contains refrigerant, which must be removed prior to scrapping according to the federal laws. Please dispose of this ice maker in accordance with all local laws and regulations.

Warranty Period

This ice maker enjoys a 1-year warranty from HiCOZY.

Where the ice maker has a fault due to its material or processing defect, HiCOZY will offer a new product to exchange for yours, or make full refund.

The warranty service shall not cover the following items:

- Door-to-door service.
- Improper maintenance.
- Replace household fuse or reset circuit breaker.
- Accidental or indirect damages due to the ice maker's defects.
- Labor expense for installing and dismantling the ice maker and other expenses.

The ice maker does not have a defect of material or process. The warranty does not cover the damages due to neglecting, misuse, pollution, alternation, accident, abnormal operation or processing. The warranty applies to the original purchaser only and shall not be transferred.

HiCOZY hopes to offer good products and after-sales services for our clients.

For any question or query, please contact us via support@hicozy.com and we are glad to help you!

Thank You for Your Purchase!

HiCOZY is always looking forward to providing our customers with excellent products and customer services.

For any questions or concerns, please contact us.
We are glad to help you!

Get in Touch

Call us: 1-866-444-2699

Mon to Fri, 9:00am to 5:00pm, PT

Email: support@hicozy.com

Online

Visit Our Website at hicozy.com

HiCOZY