

HiCOZY

USER MANUAL

ICE MAKER

HIM-D4



VERSION: 1.0

Contents

Introduction	03
Warnings	04
Package Includes	05
Diagram	06
Specifications	07
Installation	08
Button Functions	08
Instructions	10
Maintenance	14
Troubleshooting/FAQ	15
Recycling	15
Warranty Period	16

Introduction

This product is designed to make bullet-shaped ice suitable for cooling, preserving, and refreshing food and drinks. It's great for use in kitchens, living rooms, parties, and more.

To get the best performance from your new bullet ice maker, please carefully read and follow all the instructions in this manual before use. We hope you enjoy your new HiCOZY ice maker!

Thank you again for choosing HiCOZY. Questions or concerns? You are welcome to contact us via support@hicozy.com.

Please fully read and understand this manual before using and keep this manual for future reference.



Warning: Risk of fire/flammable materials.

Warnings

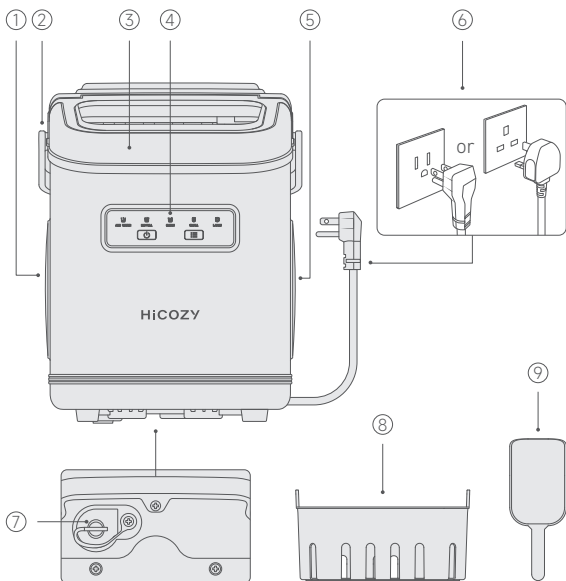
- HiCOZY recommends using chilled water for faster ice production.
- Before using, ensure the power outlet's voltage corresponds to the value shown on the appliance nameplate. The wrong voltage will damage the product.
- The product should always be grounded correctly. Only use a grounded power strip with a power rating greater than 1000W.
- Leave at least 4 inches (10.2cm) of clearance on all sides of the ice maker for proper ventilation.
- Do not attempt to disassemble, repair, modify, or replace any part of this product.
- Before using the ice maker for the first time, or after moving it, please place the ice maker on a level surface and wait for 6 hours.
- After 6 hours in the proper position, the ice maker can be used normally.
- Before operation, we recommend cleaning the ice maker as outlined in the "Maintenance" section on page 16 of this manual.
- Do not turn the ice maker upside down, this may cause the compressor and/or refrigeration system to malfunction.
- Only use this product with potable water, failure to do so is hazardous to users' health.
- Do not use hot water in this product. Always use water that is under 86°F (30°C).

- Do not immerse any part of the product into water, or touch the plug with wet hands.
- To avoid frostbite, do not touch the ice-making part while in use.
- Do not use this product in outdoor, hot, or corrosive environments.
- Always use this product on a dry, even, and stable surface.
- The incline angle of the ice maker cabinet should not exceed 45° during transportation or use.
- Do not allow children, or persons who lack the necessary experience and knowledge, to use the product.
- When not in use, please drain the water tank and dry the product with a clean towel. Then, store it in a dry and well-ventilated place.

Package Includes

Ice Maker	× 1
Ice Scoop	× 1
User Manual	× 1
Warranty Card	× 1

Diagram



① Air Inlet

④ Control Panel

⑦ Drain Plug

② Handle

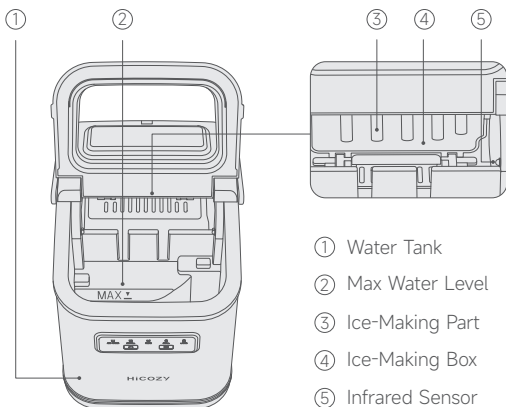
⑤ Heat Dissipation Vent

⑧ Ice Basket

③ Lid

⑥ Power Cord

⑨ Ice Scoop



Specifications

Ice-Making Time	6 ~ 10 Minutes
Ice Basket Capacity	1.3lbs (600g)
Water Tank Capacity	47.3oz (1400mL)
Working Voltage	AC 115V 60Hz 1.5A (US/CA/MX) AC 220 ~ 240V 50Hz 0.8A (UK/AE)
Power	110W
Weight	13lbs ± 5% (5.9kg ± 5%)
Dimensions	8.7 L × 11.4 W × 11.6in H (22 × 29 × 29.5cm)
Refrigerant/	R600a/0.6oz (17g) (US/CA/MX)
Refrigerant Amount	R600a/0.5oz (15g) (UK/AE)

Installation

1. Open the package and take out all the accessories.
2. Place the ice maker vertically on an even surface.
3. Use a clean towel to wipe the water tank, ice basket, and ice scoop.
4. Keep the ice maker upright for 6 hours before using it for the first time.

Button Functions

Button & Indicator Instructions



Power Button

Press to start making ice, press again to cancel.



Mode Button

Mode function:

Press to switch between large ice or small ice modes.

Cleaning function:

Press and hold for 3 seconds to turn on the cleaning function.

Press again to turn it off.



Water shortage

ADD WATER

This indicator illuminates when the water level is low.



Full ice basket

ICE FULL

This indicator illuminates when the ice basket is full.



Large ice mode

LARGE

This indicator will stay illuminated when choosing the large ice mode.



Small ice mode

SMALL

This indicator will stay illuminated when choosing the small ice mode.



Cleaning mode

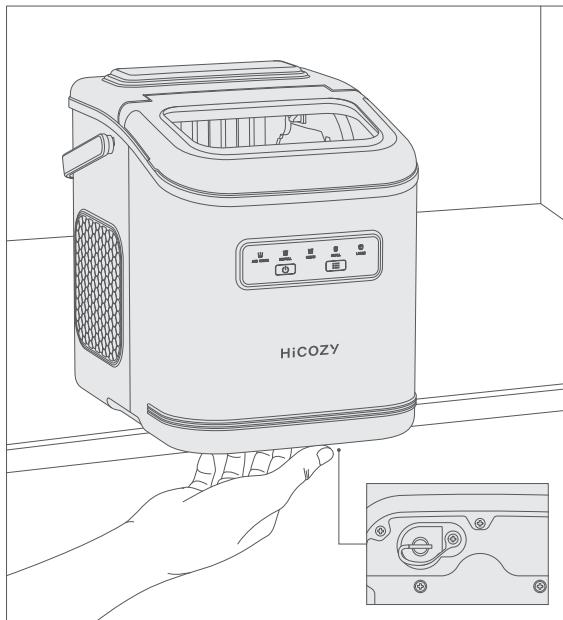
CLEAN

Indicates that the machine is currently in its self-cleaning function. After starting the cleaning mode, the indicator will stay illuminated.

Instructions

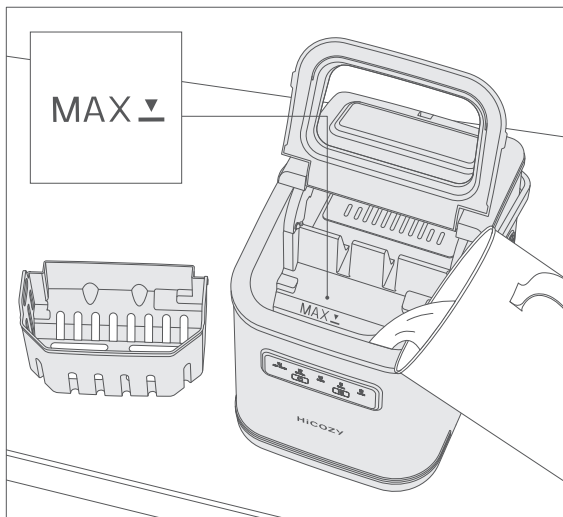
Add Water

1. Place the ice maker upright for more than 6 hours before using it for the first time.
2. Ensure the drain hole is blocked by the drain plug.



3. Slowly pour 47.3oz (1400mL) of potable water into the ice basket.

Note: Do not exceed the “MAX” water level indicator.



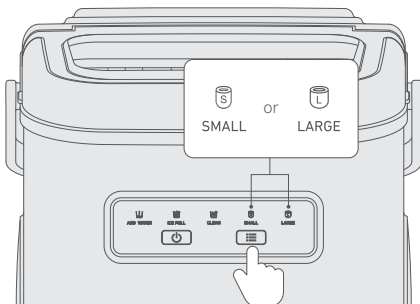
Plug In

- Check that the power outlet's voltage corresponds to the value shown on the appliance nameplate.
- After plugging in, all the indicators will flash for 1 second and then turn off.

Note: Do not use wet hands to plug in the machine. Keep the plug dry.

Start Ice-Making

1. Press the Power Button to turn on the product.
2. Press the Mode Button to choose the desired ice size.

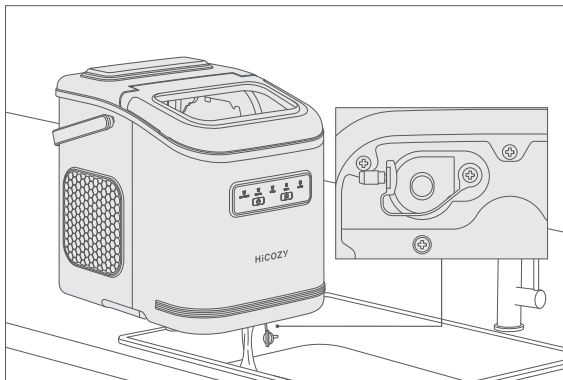


Note

- If the product has been idle for a long time or if using it for the first use, please refer to the “Maintenance” section on page 16 to clean it.
- It takes approximately 6 ~ 10 minutes to make ice. The duration may fluctuate based on the ice size, ambient temperature, and water temperature.
- The ice may come out small in the beginning because the interior cooling pipes have not completely cooled yet. This is normal and will resolve after a few minutes.
- The ice maker stops making ice after the ice basket is full and will resume making ice once the basket is no longer full.

Drain Water

1. Disconnect the power plug before draining.
2. Carefully move the ice maker to an area appropriate to drain water, such as a sink. (**Note:** Move it evenly to avoid dropping.)
3. Remove the drain plug and ensure the residual water flows into the sink.



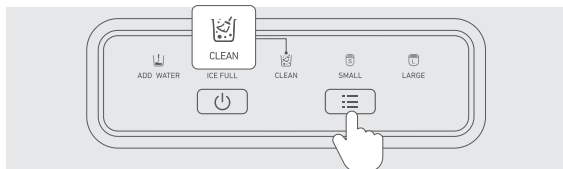
4. After the water tank is empty, securely plug in the drain plug. Use a clean towel to wipe up the residual water.
5. Put the ice maker back.
6. Drain out water in the following situations:
 - Always use fresh potable water to make ice, excess water should be drained after every use.
 - When the product will be, or has been, idle for a long time.

Maintenance

- To keep your ice tasting fresh and your ice maker clean, we recommend cleaning your ice maker at least once per week.
- Pull out the ice basket, and add some citric acid and water to the water tank. Then, put the ice basket back.

Note: Do not use organic solvents, boiled water, strong acids, or bases for cleaning.

1. Press and hold the Mode Button for 3 seconds, the cleaning indicator will illuminate and the self-cleaning process will begin. After 5 minutes, it will stop cleaning. The Power Button can be pressed to manually stop the cleaning at any time. The ice maker must be on standby mode (not making ice) for the cleaning function to be activated.



2. Disconnect the drain plug after the cleaning has stopped. After it drains, tightly plug the drain plug back in.
3. Add some fresh potable water to clean the product, activate the cleaning mode, and repeat these steps 2 ~ 4 times to ensure there is no residual cleaner in the machine.

Note: To avoid safety hazards, keep the interior components dry. Do not use solvents or chemicals to clean the plastic parts.

Troubleshooting/FAQ

The Ice Maker Does Not Work

- Check if the product is powered correctly.
- Check if the water tank has sufficient water.
- Check if the compressor works.

The Ice Maker Leaks

- Do not exceed the MAX water level when adding water.
- Check if the drain plug is tightly plugged.

With Sufficient Water, the Product Does Not Produce Ice

- Check if the water tank's filter is blocked.
- Check if the compressor works.

The Full Ice Indicator Illuminates While the Ice Basket is Not Full

The infrared sensor is blocked by ice, remove excess ice.

Recycling

This product contains a refrigerant, which under Federal Law must be removed prior to product disposal. Legally dispose of the product according to the local regulations.

Warranty Period

1-Year Limited Warranty from HiCOZY

If the ice maker fails due to a defect in materials or workmanship, during the limited one-year warranty, HiCOZY will either replace your product with a new or re-manufactured product or refund the purchase price of the product at HiCOZY's sole discretion.

What HiCOZY Will Not Cover

- Service trips to your home.
- Improper maintenance.
- Replacement house fuses or resetting of circuit breakers.
- Incidental or consequential damage caused by possible defects with this appliance.
- Labor and other charges to install and/or remove the product.

Each HiCOZY Ice Maker will be free from defects in material and craft. This warranty does not cover damage from neglect, misuse, contamination, alteration, accident, or abnormal conditions of operation or handling. This warranty covers the original purchaser only and is not transferable.

HiCOZY always wants to provide our customers with excellent products and customer service.

Questions or concerns? You are welcome to contact us via support@hicozy.com.

HiCOZY