

- LIVE HAPPY, LIVE COZY -



ICE MAKER USER MANUAL

Model: MBBS1
- V1.0 -

This product is designed for making chewable and crunchy ice, a suitable choice for cocktails and beverages. To achieve the best performance, please read and adhere to the instructions strictly before using. Please keep the user manual for future reference. We hope you enjoy your home & office ice maker.

Thank you again for choosing Hicozy. Questions or Concerns? You are welcome to contact us via support@hicozy.com.



Please fully read and understand this manual before using and keep this manual for future reference.

CATALOGUE



WARNING	6
DIAGRAM	9
SIZE DESCRIPTION	12
FUNCTION BUTTONS	14
Start button	15
Power button	16
INSTALLMENT	17
Install the ice maker	18
Install the drain tube	18
Install the water inlet tube	19
INSTRUCTIONS	20



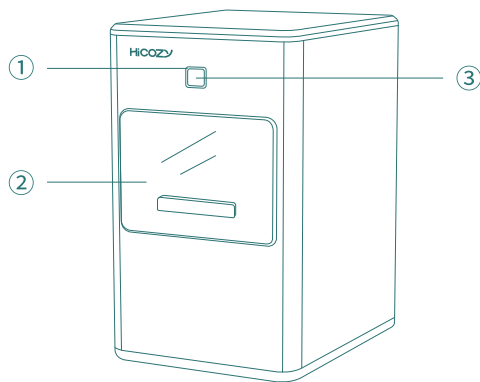
Water supplied by the water inlet port	21
Water supplied manually	22
MAINTENANCE	24
Cleaning the ice maker	25
Drain	28
TROUBLE-SHOOTING	29
SPECIFICATIONS	32
PACKAGE INCLUDED	33
RECYCLING	33
WARRANTY PERIOD	34

WARNING

- Before using, check that the voltage power corresponds to the one shown on the appliance nameplate.
- Avoid using a power strip due to overheat caution. If you have to use a power strip:
 - (1) Only use the grounded power strip.
 - (2) The electrical rating of the cord must be equal to or greater than the rating of this appliance.
- Do not, under any circumstances, alter or remove the third (ground) prong from the power cord. For personal safety, this product must be properly grounded.
- Do not use water that is microbiologically unsafe or of unknown quality.
- Fill the water reservoir with water of room temperature or lower.
- Do not immerse any part of the product into water, or plug or unplug the product with wet hands.
- Do not touch the ice-making parts when using to avoid frostbite.
- Do not use outdoors.
- The appliance must be placed upright on a flat and level surface in a well-ventilated area with an ambient temperature between 55°F-90°F (13°C-32°C).
- Keep away from heat sources such as ovens, heaters, or corrosive gases.
- Leave a 4 inches (10.2 cm) clearance on all sides of the ice maker for proper ventilation.
- Do not use the appliance for other than intended use.
- Do not attempt to disassemble, repair, modify, or replace any part of your product.

- The incline angle of the ice maker cabinet should not exceed 45° during transportation or use.
- Do not turn the ice maker upside down, which may lead to disfunction of the compressor or the refrigerating system.
- Please allow time for the fluids in the compressor to settle after the ice maker is moved or transported.
- Before using the ice maker for the first time, please wait for 6 hours after the ice maker has been leveled and positioned in the proper place.
- This appliance is not intended for use by persons (including children) with reduced physical, sensory or mental capabilities, or lack of experience and knowledge unless they have been given supervision or instruction concerning the use of the appliances by a person responsible for their safety.
- Clean the appliance by following the operation of 'Maintenance' before operating.

D IAGRAM



① Indicator

② Ice basket

③ Start button

④ Interior lightbulb

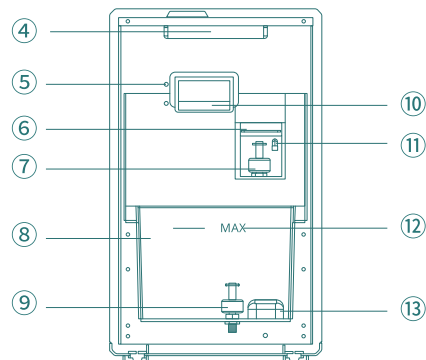
⑤ Temperature probes

⑥ Baffle

⑦ Sensor

⑧ Water reservoir

⑨ Sensor

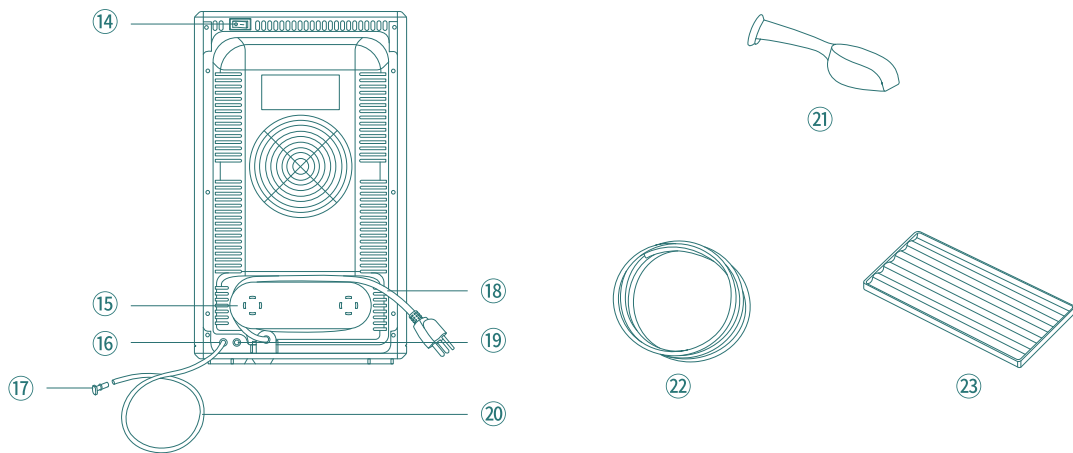


⑩ Ice producing port

⑪ Water inlet port

⑫ Maximum water level

⑬ Filter cover



⑭ Power button

⑮ Storage groove

⑯ Drain port

⑰ Drain plug

⑱ Power cord

⑲ Water inlet port

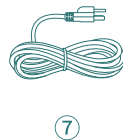
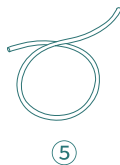
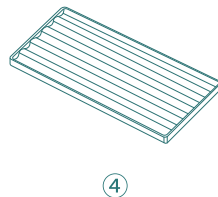
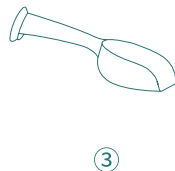
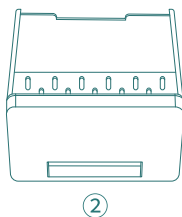
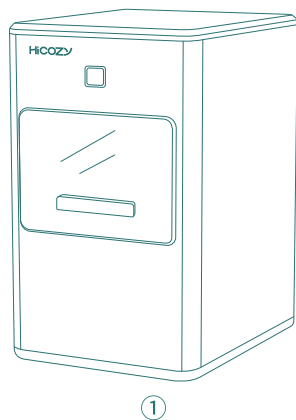
⑳ Drain tube

㉑ Ice scoop

㉒ Water inlet tube

㉓ Tray

SIZE DESCRIPTION



① Ice Maker:406×360×245mm/16×14.2×9.6in

② Ice Basket:199×156×142mm/7.8×6.1×5.6in

③ Ice Scoop:186×76×38mm/7.3×3×1.5in

④ Tray:202×122×12mm/8×4.8×0.5in

⑤ Drain Tube:φ9×500mm/φ0.35×19.7in

⑥ Water Inlet Tube:5000mm/196.9in

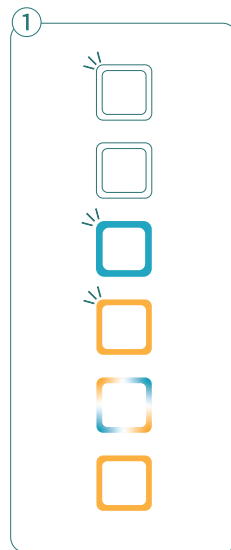
⑦ Power Cord:1800mm/70.9in

FUNCTION BUTTONS

----- **START BUTTON**

- Instructions of the indicator (As figure ①):

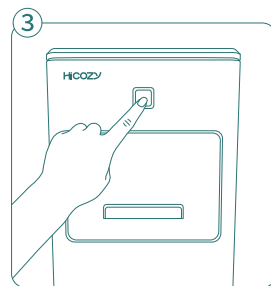
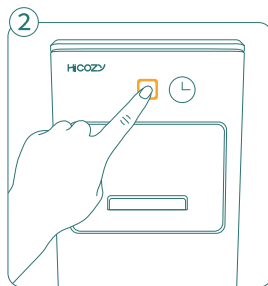
- (1) Flashing white light—— standby status: power supplied, waiting for next move.
- (2) Light off——power-off status: power off.
- (3) Flashing blue light——full indicator: ice basket is full; the ice maker will stop producing ice.
- (4) Flashing yellow light——water shortage: more water needed.
- (5) Random 3 color flashing——ice-making status: the ice maker is operating.
- (6) Long-lighting yellow light——cleaning mode: the ice maker is self-cleaning; it takes 3 minutes approximately. Do not disconnect the power supply.



- Usage of the start button:

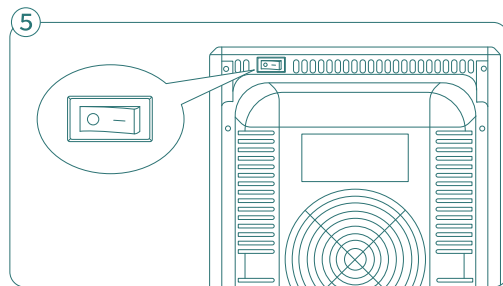
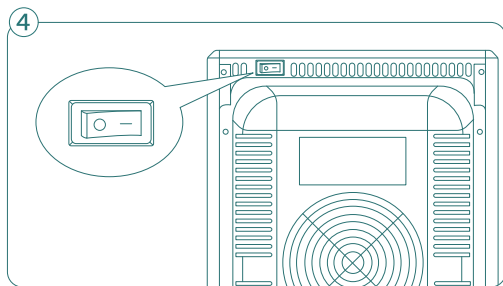
(1) Press and hold for 3 seconds: cleaning function. (As figure ②)

(2) Short press: start/stop the ice-making. (As figure ③)



----- POWER BUTTON

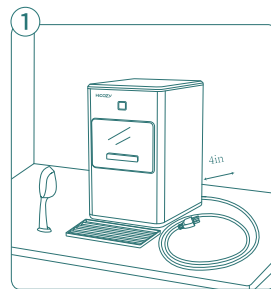
- 'ON': power on, and Interior lightbulb lighting on. (As figure ④)
- 'OFF': power off. (As figure ⑤)



I NSTALLMENT

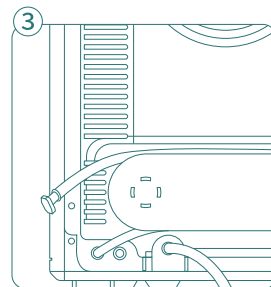
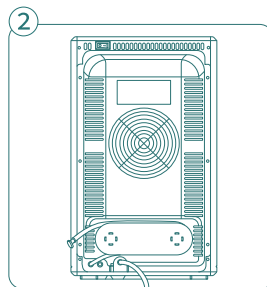
----- INSTALL THE ICE MAKER

- Unpack and take out all the accessories. (As figure ①)
- Place the ice maker upright on a flat surface.
- Install the tray under the ice maker.
- Pull the power cord out from the storage groove gently.
- Place the ice maker upright for 6 hours before the first use.



----- INSTALL THE DRAIN TUBE

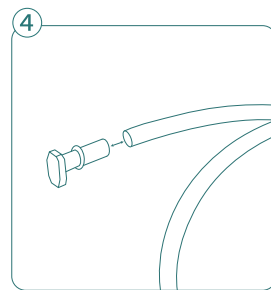
- The drain tube is connected to the body by factory default. (As figure ②)
- Ensure the drain tube is connected firmly to the back of the drain port when the ice maker is running. (As figure ③)



- Unplug the drain plug to drain the water. Then plug the drain plug into the drain tube after draining out. (As figure ④)
- Store the drain tube into the storage groove when not in use.
- The drain tube is available to unplug for replacement.

Note:

- Replace the drain tube with the same specification.
- The drain tube and drain port are connected firmly, uneasy to install. Please do not uninstall it too frequently.
- Do not shake the ice maker violently when draining water.

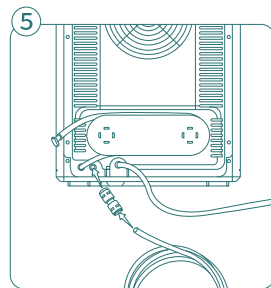


----- INSTALL THE WATER INLET TUBE

- Locate the water inlet tube on the lower-left corner.
- Connect the water inlet port and water supply with the water inlet tube. (As figure ⑤)
- Open the water valve, water will supply to the ice maker automatically.

Note:

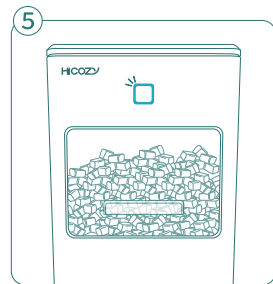
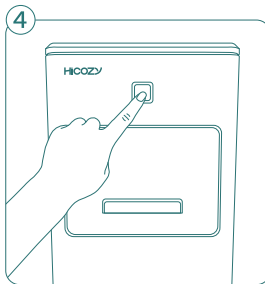
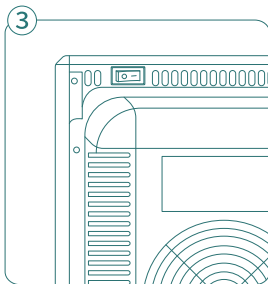
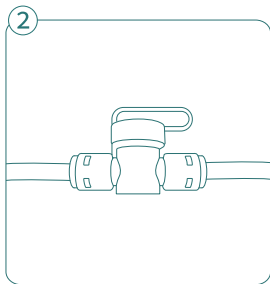
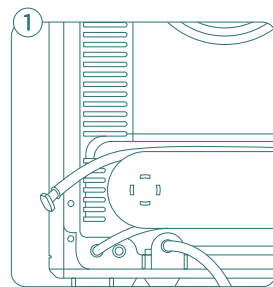
- Do not connect to any high-pressure water valve.
- To sure smooth water supply, do not bend or twist the water inlet tube.



I NSTRUCTIONS

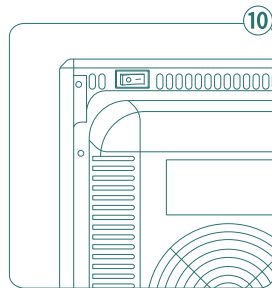
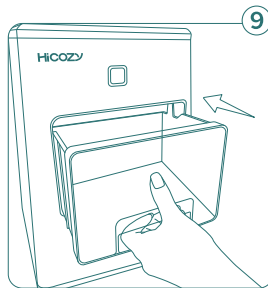
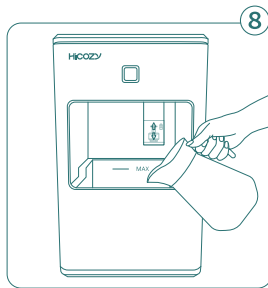
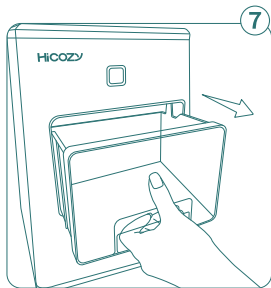
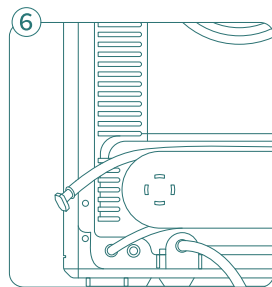
----- WATER SUPPLIED VIA TUBE

- Ensure the drain plug is plugged firmly. (As figure ①)
- Ensure the water valve is open.(As figure ②)
- Turn on the power button on the back of the ice maker.
(As figure ③)
- Press the start button to produce ice. (As figure ④)
- Ice will drop into the ice basket until the ice basket is full.
(As figure ⑤)

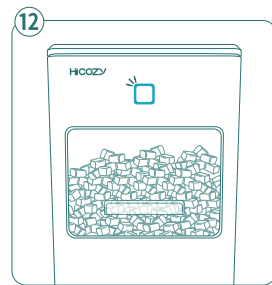
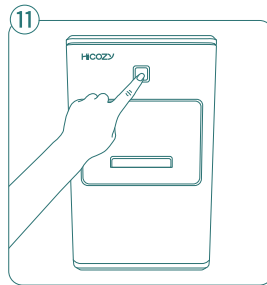


----- WATER SUPPLIED MANUALLY

- Ensure the drain plug is plugged firmly. (As figure ⑥)
- Pull out the ice basket. (As figure ⑦)
- Fill the water reservoir with drinkable water.(Note: Do not exceed the MAX water level.) (As figure ⑧)
- Put back the ice basket. (As figure ⑨)
- Turn on the power button on the back of the ice maker. (As figure ⑩)



- Press the start button to produce ice.
(As figure ⑪)
- Ice will drop into the ice basket until the ice basket is full. (As figure ⑫)



Note:

- It takes 5 minutes to make ice approximately. The duration may fluctuate based on the ambient temperature and water temperature.
- Please clean the ice maker before first use.
- The ice maker will stop producing ice when the ice basket is full. Users shall press the start button again to start ice producing.
- Please fill the water reservoir with potable water (safe to drink). Do not fill the water reservoir with any liquid except water.
- Ensure the baffle is closed or it may cause malfunction.

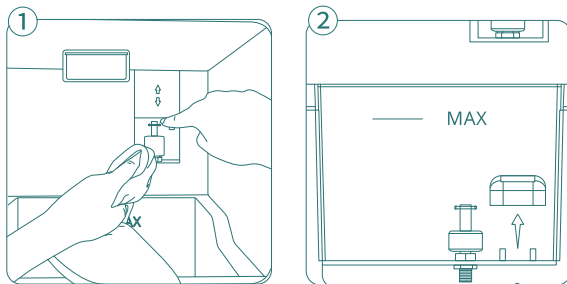
MAINTENANCE

----- CLEANING

TO KEEP YOUR ICE TASTING FRESH AND YOUR ICE MAKER LOOKING GREAT, WE RECOMMEND CLEANING YOUR ICE MAKER AT LEAST ONCE PER WEEK.

I. Cleaning the interior of the ice maker

- Clean the interior and water tank with a soft cloth drenched with warm water. (As figure ①)
- Cleaning the ice producing port. (Note: Do not touch the lighting part on the top.)
- Lift the baffle of the water tank to clean the interior and crevices with a soft cloth.
- Remove the filter cover to clean the interior and structure. (As figure ②)
- Repeat the steps above until it is clean.



II. Cleaning the interior tube

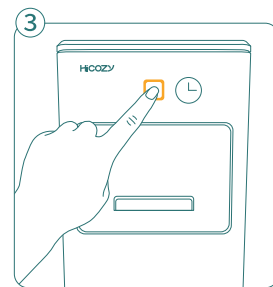
- Pull out the ice basket, add some lemon acid and water to the water reservoir, put the ice basket back.

(Note:

a. Do not use organic solvents, boiled water, strong acid or base for cleaning.

b. Please wait at least one hour to clean the ice maker after the ice maker stops producing ice.)

- Press and hold the start button for 3 seconds, the indicator will light up yellow to indicate the cleaning mode starts. The cleaning process takes 3 around minutes; the indicator will pulse white when the cleaning is completed. (As figure ③)
- Take out the drain tube to drain the water; plug the drain plug in firmly after completion.
- Fill clean water in the water reservoir, press the start button to start cleaning mode. Repeat 2-4 times until the ice maker became clean and no residual detergents. (Note: If water is supplied via tube, users may press the start button to enter the cleaning mode directly.)

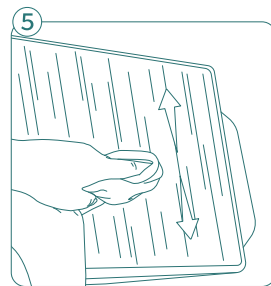
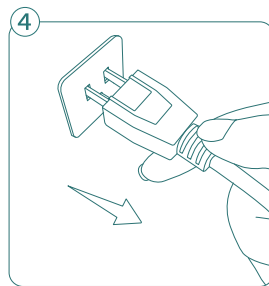


III. Cleaning accessories

- Cleaning ice basket, tray, ice scoop with a soft cloth dipped in soapy water, dry with a soft cloth after rinsing them. (Note: Do not use solvents or chemicals.)

IV. Cleaning surface of the ice maker

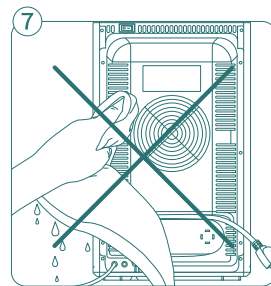
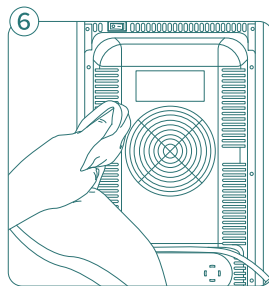
- Turn off the ice maker and unplug. (As figure ④)
- Commercial cleanser for stainless steel and granule-free liquid cleanser are eligible for cleaning the stainless steel surface, and rub in the direction of the brush lines with a damp, soft sponge. Then dry the surface with a soft cloth as well. (Note: Do not apply appliance wax, polisher, solvents, or chemicals on the stainless steel surface.) (As figure ⑤)



- Clean the plastic part of the ice maker with a soft cloth dipped in soapy water, then clean it gently; dry with a soft cloth. (Note: Do not use the dripping cloth to clean the exterior of the ice maker. Do not rinse the ice maker in case water enters the ice maker's interior.)

(As figure ⑥⑦)

- Place the ice maker upright, let the ice maker dry completely.



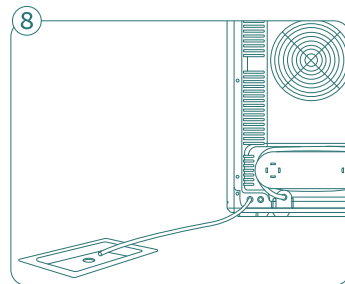
----- DRAIN

- We recommend draining out the ice maker for the following circumstances. (As figure ⑧)

(1) When you need to put away or move the ice maker.

(2) Continuous recirculation of meltwater may affect the taste. To achieve the best performance, please drain your ice maker.

(3) When the ice maker is not in use for a long time.



TROUBLE-SHOOTING

Q:The water reservoir is full but the indicator pulse yellow.

A:Possible causes:

- (1) The filter cover is clogged.
- (2) The water pump is out of order.
- (3) The float in the water reservoir is clogged.

You may remove the filter cover to check if there are any foreign objects; then re-start the ice maker.

Q:The indicator flashes in blue but the ice is not full in the ice basket.

A:It could be a sensor malfunction or ice accumulated around the sensor. You may clean the sensor and take out the ice in the ice basket; then re-start the ice maker.

Q:The ice-making process is normal but the ice produced is broken, which lasts for more than 2 hours.

A:Possible causes:

- (1) Poor heat dissipation.
- (2) The water temperature is too high.

(3) The ambient temperature is too high.

Allow at least 4 inches (10.2cm) of distance from the back and sides of the appliance to allow proper ventilation. Filling with hot water may cause malfunction. If the ambient temperature is too high (>32°C/90°F) or malfunction will happen.

Q: Ice cubes stick together.

A: The ice-making time is too long or the temperature in the water reservoir is too low.

Stop the ice-making. Restart the ice-making process after the ice melted. Ensure the temperature in the water reservoir is higher than 8°C/46°F.

Q: Loud noise during operating.

A: The ice maker has not been cleaned for a long time, resulting in the formation of sticky substances in the water inlet of the pump, making the water pumping performance poorly. The appliance should be washed in one week or two, please use mild cleansers.

Note: Please feel free to reach our professional customer service team if the above solutions failed to address your problems.

SPECIFICATIONS

- Product: Ice Maker
- Model: MBBS1
- Power source (USA): AC 120V /60Hz
Power source (CA/UK): AC 220-240V/50Hz
- Rated power: 180~220W
- Refrigerant/Refrigerant amount: R290 /0.92lb(26g)
- Net weight: 12.7kg/28lb
- Housing: Stainless Steel
- Unit size: 16×14.2×9.6in/406×360×245mm
- Ice making time: 3-5 minutes
- 21°C ice-making volume: >2lb(907g)/h
- Ice-making per day: 55lb/25Kg
- Noise: <45db
- Average ice basket capacity: 1200g±10%
- Maximum ice basket capacity: 1800g±10%
- Water reservoir capacity: 2L
- Certificate: ETL/CE/UKCA
- Operating environment: 55°F - 90°F



APEX CE SPECIALISTS LIMITED
89 Princess Street, Manchester, M1 4HT, UK
E-Mail: info@apex-ce.com



APEX CE SPECIALISTS LIMITED
UNIT 3D NORTH POINT HOUSE, NORTH POINT BUSINESS PARK,
NEW MALLOW ROAD, CORK, T23 AT2P, IRELAND



PACKAGE INCLUDED:

- Ice Maker×1
- Hicozy Brand Brochure×1
- Ice Scoop×1
- User Manual×1
- Water Inlet Tube×1
- Tray ×1



This product contains a refrigerant, which under Federal Law must be removed prior to product disposal. If you are disposing of this, or any refrigeration product, check with your local waste company for guidance.

WARRANTY PERIOD

1- Year Warranty Limited Warranty From Hicozy

- For the Period of: One Year From the date of the original purchase.
- Appliances Covers: If the ice machine fails due to a defect in materials or workmanship, during the limited one-year warranty. Hicozy will either replace your product with a new or remanufactured product or refund the purchase price of the product at Hicozy sole discretion.

What Hicozy will not cover

- Service trips to your home.
- Improper maintenance.
- Replace the house fuses or resetting of the circuit breakers.
- Incidental or consequential damage caused by possible defects with this appliance.
- Labor and other charges to install and/ or remove the product.

Each Hicozy home & office ice maker will be free from defects in material and craft. This warranty does not cover damage from neglect, misuse, contamination, alteration, accident, or abnormal conditions of operation or handling. This warranty covers the original purchaser only and is not transferable.

Hicozy always wants to provide our customers with excellent products as well as customer service.

Questions or Concerns? You are welcome to contact us with your questions via support@hicozy.com.

- LIVE HAPPY, LIVE COZY -



12-month Warranty



Lifetime Technical Support



Email: support@hicozy.com



Toll-Free Number: 1-866-444-2699
Mon to Fri, 9:00am to 5:00pm, PST/PDT



Contact Us
hicozy.com/support



@hicozy



@hicozy_official