

- LIVE HAPPY, LIVE COZY -



HiCOZY ICE MAKER USER MANUAL

Model: MBBS1
- V1.1 -

This product is designed to make chewable, crunchy ice suitable for cocktails and other beverages. To achieve the best performance, please carefully read and follow these instructions before use. Please keep this user manual for future reference. We hope you enjoy your home & office ice maker!

Thank you again for choosing HiCOZY. Questions or Concerns? You are welcome to contact us via support@hicozy.com



Please fully read and understand this manual before using and keep this manual for future reference.

CATALOG



WARNING	06
DIAGRAM	09
SIZE DESCRIPTION	12
FUNCTION BUTTONS	14
Start button	15
Power button	16
INSTALLMENT	17
Install the ice maker	18
Install the drain tube	18
Install the water inlet tube	19
INSTRUCTIONS	20



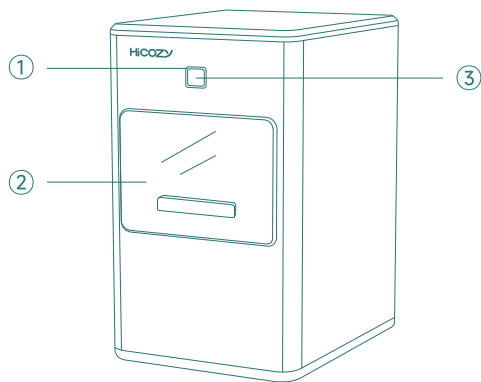
Water supplied by the water intake port	21
Water supplied manually	22
MAINTENANCE	24
Cleaning the ice maker	25
Drain	28
TROUBLE-SHOOTING	29
SPECIFICATIONS	32
PACKAGE INCLUDED	33
RECYCLING	33
WARRANTY PERIOD	34

WARNING

- Before using, ensure the power supply's voltage corresponds to the value shown on the appliance nameplate.
- Due to an increased risk of overheating, we recommend you avoid using this ice maker with a power strip. If you must use a power strip:
 - (1) Only use a grounded power strip.
 - (2) The cord's electrical rating must be equal to or greater than the rating of this appliance.
- Do not, under any circumstances, alter or remove the third (ground) prong from the power cord. For personal safety, this product must be properly grounded.
- Do not use water that is microbiologically unsafe or of unknown quality.
- Fill the water reservoir with water of room temperature or lower.
- Do not immerse any part of the product into water, or touch the plug with wet hands.
- To avoid frostbite, do not touch the ice-making parts while in use.
- Do not use outdoors.
- The appliance must be placed upright on a flat and level surface in a well-ventilated area with an ambient temperature between 55°F-90°F (13°C-32°C).
- Keep away from heat sources such as ovens, heaters, or corrosive gasses.

- Leave at least 4 inches (10.2 cm) clearance on all sides of the ice maker for proper ventilation.
- Do not use the appliance for anything other than its intended use.
- Do not attempt to disassemble, repair, modify, or replace any part of your product.
- The incline angle of the ice maker cabinet should not exceed 45° during transportation or use.
- Do not turn the ice maker upside down, this may cause the compressor and/or refrigerating system to malfunction.
- Please allow time for the fluids in the compressor to settle after the ice maker is moved or transported.
- Before using the ice maker for the first time, please wait 6 hours after the ice maker has been leveled and positioned properly.
- This appliance is not intended for use by persons (including children) with reduced physical, sensory or mental capabilities, or lack of experience and knowledge, unless they have been given supervision or instruction concerning the use of the appliance by a person responsible for their safety.
- Before operation, we recommend cleaning the ice maker as outlined in the 'Maintenance' section of this manual.

DIAGRAM



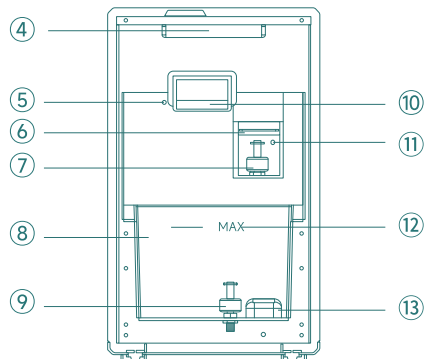
① Indicator

② Ice basket

③ Start button

④ Interior light

⑤ Temperature probes



⑥ Baffle

⑦ Sensor

⑧ Water reservoir

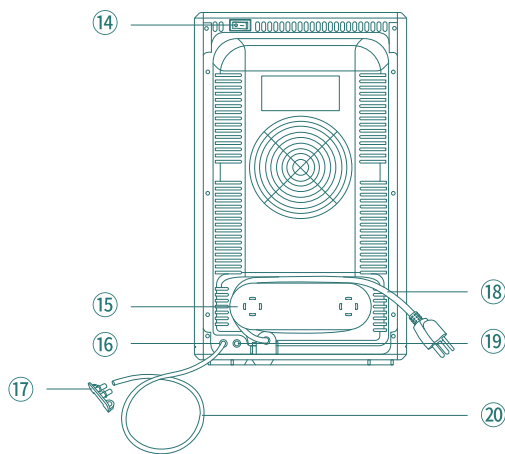
⑨ Sensor

⑩ Ice producing port

⑪ Water intake port

⑫ Maximum water level

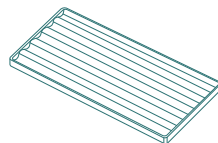
⑬ Filter cover



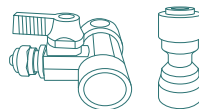
21



22



23



24

14 Power button

15 Storage groove

16 Drain port

17 Drain plug

18 Power cord

19 Water intake port

20 Drain tube

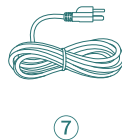
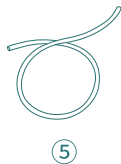
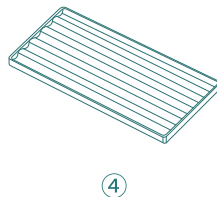
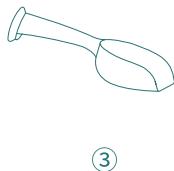
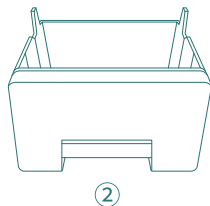
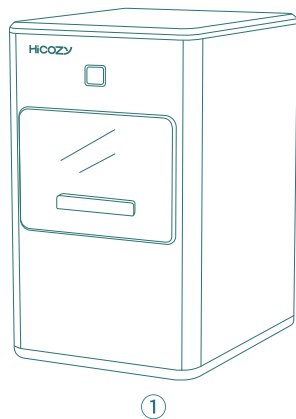
21 Ice scoop

22 Water inlet tube

23 Tray

24 Inlet fittings

SIZE



① **Ice Maker:** 14.2×9.6×16in (360×245×406mm)

② **Ice Basket:** 7.8×5.6×6.1in (199×142×156mm)

③ **Ice Scoop:** 7.3×3×1.5in (186×76×38mm)

④ **Tray:** 9.4×4.8×0.5in (240×122×12mm)

⑤ **Drain Tube:** $\Phi 0.35 \times 19.7$ in ($\Phi 9 \times 500$ mm)

⑥ **Water Inlet Tube:** 137.8in (3500mm)

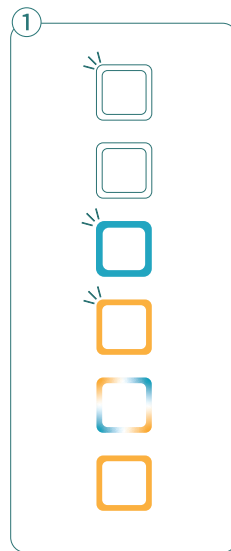
⑦ **Power Cord:** 70.9in (1800mm)

BUTTON OPERATION

START BUTTON

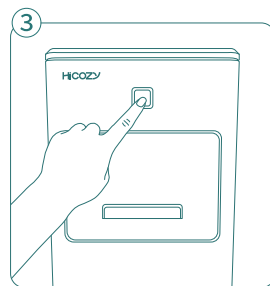
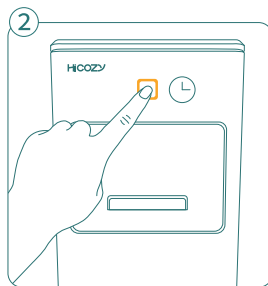
- Indicator key (As figure ①):

- (1) Flashing white light—— Standby status: Powered on, awaiting input.
- (2) Light off——Power-off status: Device is powered off.
- (3) Flashing blue light——Full indicator: The ice basket is full; the ice maker will stop producing ice.
- (4) Flashing yellow light——Water shortage: More water needed.
- (5) Random 3-color flashing——Ice-making status: The ice maker is operating.
- (6) Solid yellow light——Cleaning mode: The ice maker is self-cleaning; it takes approximately 3 minutes. Do not disconnect the power supply.



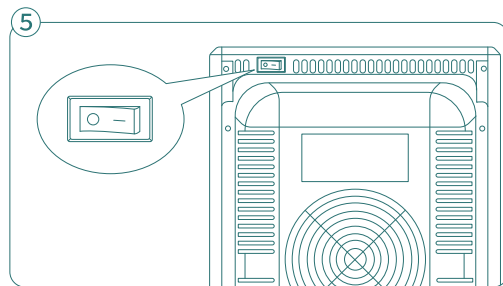
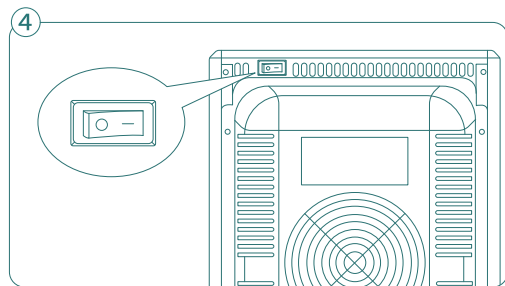
- **Start button use:**

- (1) Press and hold for 3 seconds: Activates cleaning mode.(As figure ②)
- (2) Short press: Start/stop the ice-making.(As figure ③)



----- **POWER BUTTON**

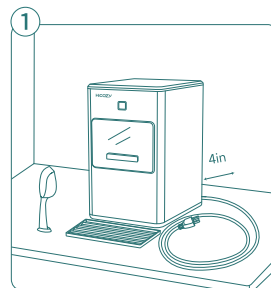
- 'ON': Power on, the interior light will turn on. (As figure ④)
- 'OFF': Power off. (As figure ⑤)



INSTALLATION

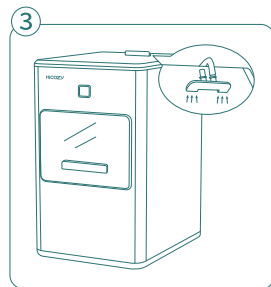
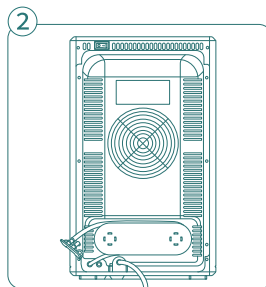
----- INSTALLING THE ICE MAKER

- Unpack and remove the included accessories.(As figure ①)
- Place the ice maker upright on a flat surface.
- Install the tray under the ice maker.
- Place the ice maker upright for 6 hours before the first use.



----- INSTALLING THE DRAIN TUBE

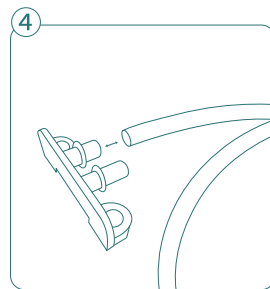
- By default, the drain tube is connected to the body at the factory.
- Ensure the drain tube is firmly connected to the back of the drain port while the ice maker is running.
- Store the drain tube in the storage groove when not in use. Or, stick the drain tube on the body with the magnetic drain plug.(As figure ② ③)



- Unplug the drain plug to drain the water. After draining, plug the drain plug back into the drain. (As figure ④)
- If needed, the drain tube can be unplugged and replaced.

Note:

- (1) If replacing the drain tube, use a tube with the same specifications as the original.
- (2) Avoid frequently uninstalling the drain tube, it is firmly connected to the drain port, making it difficult to uninstall.
- (3) Do not excessively shake the ice maker when draining water.

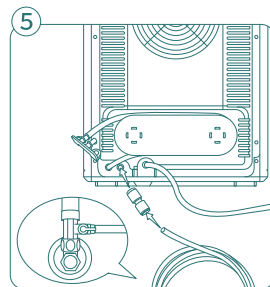


----- INSTALLING THE WATER INTAKE TUBE

- Locate the water intake tube on the lower-left corner.
- Connect the water intake port and water supply with the tube.
- Opening the water valve, will automatically supply the ice maker.

Note:

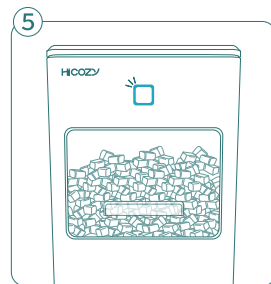
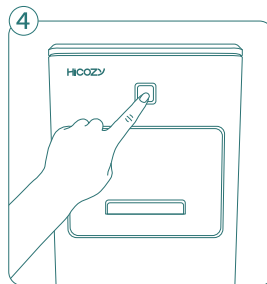
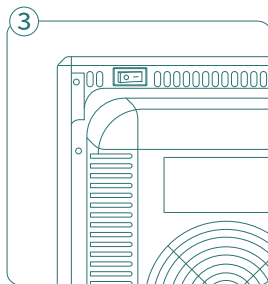
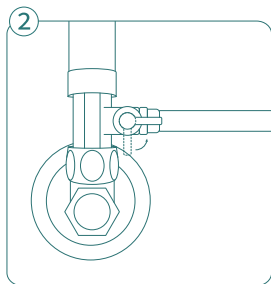
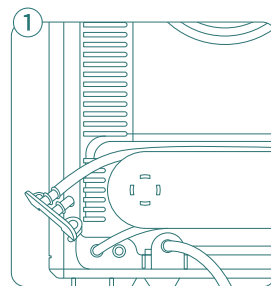
- (1) Do not connect to any high-pressure water valves.
- (2) To ensure a smooth water supply, do not bend or twist the water intake tube.



I NSTRUCTIONS

----- WATER SUPPLIED VIA TUBE

- Ensure the drain plug is securely plugged. (As figure ①)
- Install the inlet tube first, then turn on the water supply. (As figure ②)
- Flip the power switch on the backside of the ice maker. (As figure ③)
- Press the start button to begin producing ice. (As figure ④)
- Ice will drop into the ice basket until it is full. (As figure ⑤)

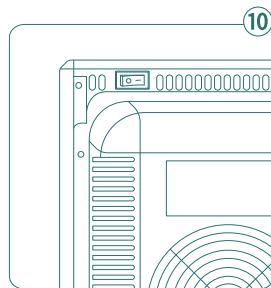
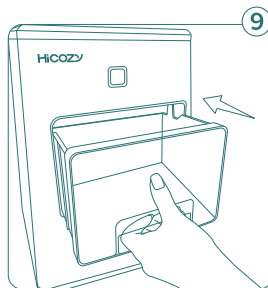
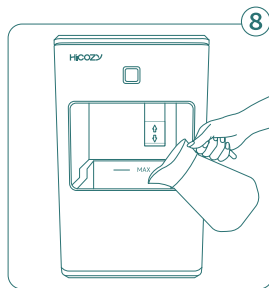
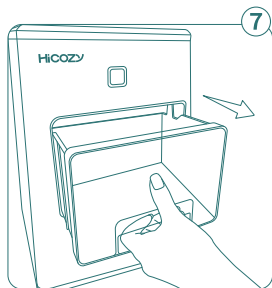
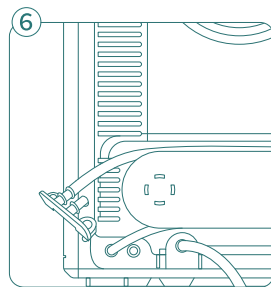


----- WATER SUPPLIED MANUALLY

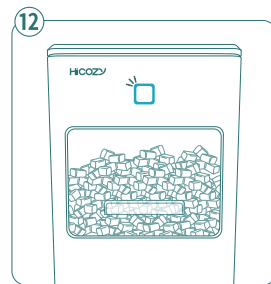
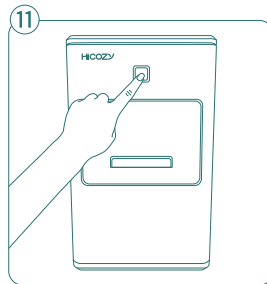
- Ensure the drain plug is securely plugged. (As figure ⑥)
- Pull out the ice basket. (As figure ⑦)
- Fill the water reservoir with drinkable water.

Note: Do not exceed the MAX water level. (As figure ⑧)

- Put back the ice basket. (As figure ⑨)
- Flip the power switch on the backside of the ice maker. (As figure ⑩)



- Press the start button to begin producing ice. (As figure ⑪)
- Ice will drop into the ice basket until it is full. (As figure ⑫)



- **Note:**

- (1) It takes approximately 5 minutes to start making ice. The duration may vary based on both the ambient and water temperatures.
- (2) Please clean the ice maker before initial use.
- (3) The ice maker will stop producing ice when the ice basket is full. To restart ice production, empty the ice basket and press the start button again.
- (4) Only fill the water reservoir with potable water (safe to drink). Do not fill the water reservoir with any liquid except water.
- (5) Ensure the baffle is closed or it may cause malfunction.

MAINTENANCE

----- CLEANING

TO KEEP YOUR ICE TASTING FRESH AND YOUR ICE MAKER LOOKING GREAT, WE RECOMMEND CLEANING YOUR ICE MAKER AT LEAST ONCE PER WEEK.

I. Cleaning the interior of the ice maker

(1) Clean the interior and water tank with a warm and wet soft cloth. (As figure ①)

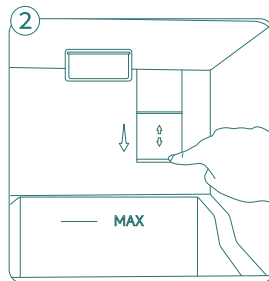
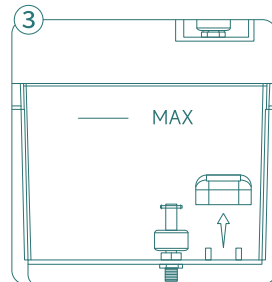
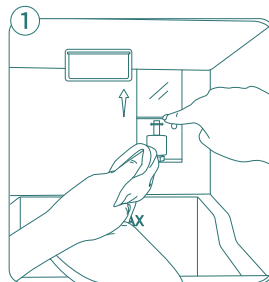
(2) Cleaning the ice producing port.

Note: Do not touch the lighting part on the top.

(3) Lift the baffle of the water tank to clean the interior and crevices with a soft cloth. Pull down the baffle after cleaning. (As figure ②)

(4) Remove the filter cover to clean the interior and structure. (As figure ③)

(5) Repeat the steps above until it is clean.



II. Cleaning the interior tube

- (1) Pull out the ice basket, add some citric acid and water to the water reservoir, put the ice basket back.

Note:

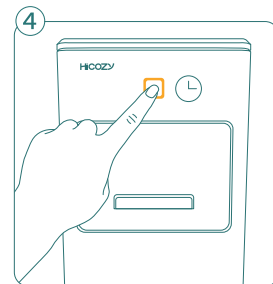
- a: Do not use organic solvents, boiled water, strong acids, or bases for cleaning.
- b: Please wait at least one hour after powering the ice maker off before cleaning it

- (2) Press and hold the start button for 3 seconds, the indicator will light up yellow as cleaning mode begins. The cleaning process takes around 3 minutes; the indicator will pulse white when the cleaning is complete. (As figure ④)

- (3) Take out the drain tube to drain the water; firmly plug in the drain after completion.

- (4) Fill the water reservoir with clean water and press the start button to activate cleaning mode. Repeat 2-4 times until the ice maker is clean and free from residual detergents.

Note: If water is supplied via tube, users may press the start button to enter the cleaning mode directly.



III. Cleaning accessories

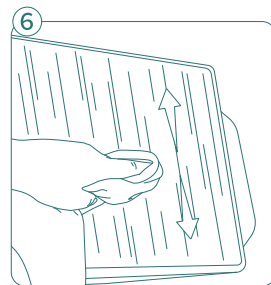
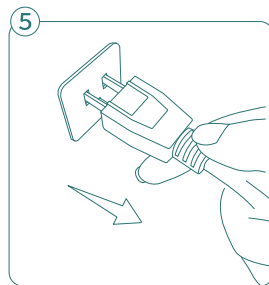
- (1) Clean the ice basket, tray, and ice scoop with a soft cloth dipped in soapy water, dry with a soft cloth after rinsing them.

Note: Do not use solvents or chemicals.

IV. Cleaning the ice maker body

- (1) Turn off the ice maker and unplug it. (As figure ⑤)
- (2) Use commercial stainless steel or granule-free liquid cleaners to clean the ice maker's stainless steel surface. Rub in the direction of the brush lines with a damp, soft sponge. Then, dry the surface with a soft cloth. (As figure ⑥)

Note: Do not apply appliance wax, polisher, solvents, or other chemicals to the stainless steel surface.

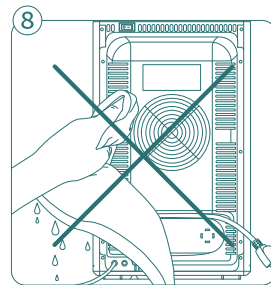
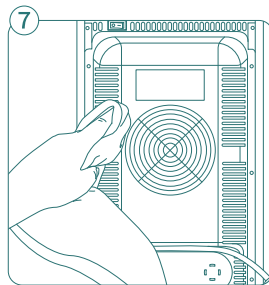


(3) Clean the plastic part of the ice maker with a soft cloth dipped in soapy water. Then, clean it gently and dry with a soft cloth.

Note: Do not use a wet cloth to clean the exterior of the ice maker. Do not rinse the ice maker, water should never enter its interior.

(As figure ⑦⑧)

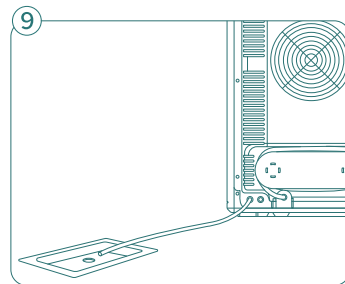
(4) Place the ice maker upright and let it dry completely.



----- DRAINING

- We recommend draining out the ice maker in the following circumstances. (As figure ⑨)

- (1) When you need to put away or move the ice maker.
- (2) Continuous recirculation of meltwater may affect the taste. To achieve the best performance, periodically drain your ice maker.
- (3) When the ice maker is not in use for a long time.



TROUBLE-SHOOTING

Q: The water reservoir is full but the indicator is pulsing yellow.

A: Possible causes:

- (1) The filter cover is clogged.
- (2) The water pump has failed.
- (3) The float in the water reservoir is clogged.
- (4) The baffle in the water tank is stuck.

Remove the filter cover to check if there are any foreign objects. Ensure the baffle in the water tank is closed. Then, re-start the ice maker.

Q: The indicator is flashing blue but the ice basket is not full.

A: Possible sensor malfunction or ice accumulated around the sensor. Clean the sensor and remove the ice in the basket; then re-start the ice maker.

Q: The ice-making process is normal but the maker has been producing broken ice for more than 2 hours.

A: Possible causes:

- (1) Poor heat dissipation.
- (2) The water temperature is too high.

(3) The ambient temperature is too high.

Allow at least 4 inches (10.2cm) of clearance around the back and sides of the appliance to allow proper ventilation. Filling with hot water may cause a malfunction. If the ambient temperature is too high(>32°C/90°F) malfunction will occur.

Q: Ice cubes stick together.

A: The ice-making is taking too long or the temperature in the water reservoir is too low.

Stop the ice-making process. Restart after the ice has melted. Ensure the temperature in the water reservoir is higher than 8°C/46°F.

Q: Loud noise during operating.

A: The ice maker has not been cleaned enough, resulting in the formation of sticky substances in the pump's water intake, causing the pump to perform poorly. The appliance should be cleaned regularly with mild cleaners as outlined in the "Cleaning" section.

Note: Please feel free to contact our professional customer service team if the above solutions fail to address your problems.

SPECIFICATIONS

- Product: Ice Maker
- Model: MBBS1
- Power source(USA/CA): 120VAC 60Hz 2.0A
- Power source (EU/UK): 220-240VAC 50-60Hz 1.0A
- Rated power: 180~220W
- Refrigerant/Refrigerant amount: R290/0.9oz(26g)
- Net weight: 12.7kg/28lb
- Housing: Stainless Steel
- Unit size: 14.2×9.6×16in (360×245×406mm)
- Ice making time: 3-5 minutes
- 21°C ice-making volume: >2lb(907g)/h
- Ice-making per day: 55lb/25Kg
- Noise: <45db
- Average ice basket capacity: 1200g±10%
- Maximum ice basket capacity: 1800g±10%
- Water reservoir capacity: 2L
- Certificate: ETL/CE/UKCA
- Operating environment: 55°F - 90°F

PACKAGE INCLUDED:

- | | | | | |
|-----------------|----|-------------------------|----|------------------|
| • Ice Maker | ×1 | • Ice Scoop | ×1 | |
| • User Manual | ×1 | • Water Intake Tube | ×1 | • Tray |
| • Warranty Card | ×1 | • HiCOZY Brand Brochure | ×1 | • Inlet fittings |
| | | | | ×2 |



APEX CE SPECIALISTS LIMITED

89 Princess Street, Manchester, M1 4HT.UK
E-Mail: info@apex-ce.com



APEX CE SPECIALISTS LIMITED UNIT

3D NORTH POINT HOUSE, NORTH POINT BUSINESS PARK,
NEW MALLOW ROAD,CORK.T23 AT2P.IRELAND



This product contains a refrigerant, which under Federal Law must be removed prior to product disposal. If you are disposing of this, or any other refrigeration product, check with your local waste company for guidance.

WARRANTY PERIOD

1- YEAR LIMITED WARRANTY FROM HiCOZY

- **For the Period of:** One Year From the date of the original purchase.
- **Appliances Covers:** If the ice machine fails due to a defect in materials or workmanship during the limited one-year warranty, HiCOZY will either replace your product with a new or remanufactured product or refund the purchase price of the product at HiCOZY's sole discretion.

What HiCOZY will not cover:

- Service trips to your home.
- Improper maintenance.
- Replacement of house fuses or resetting of the circuit breakers.
- Incidental or consequential damage caused by possible defects with this appliance.
- Labor and other charges to install and/ or remove the product.

Each HiCOZY home & office ice maker will be free from defects in material and craft. This warranty does not cover damage from neglect, misuse, contamination, alteration, accident, or abnormal conditions of operation or handling. This warranty covers the original purchaser only and is not transferable.

HiCOZY always wants to provide our customers with excellent products and customer service.

Questions or Concerns? You are welcome to contact us with your questions via support@hicozy.com

- LIVE HAPPY, LIVE COZY -



12-month Warranty



Lifetime Technical Support



Email: support@hicozy.com



Toll-Free Number: 1-866-444-2699
Mon to Fri, 9:00am to 5:00pm, PST/PDT



Contact Us
hicozy.com/support



@hicozy



@hicozy_official