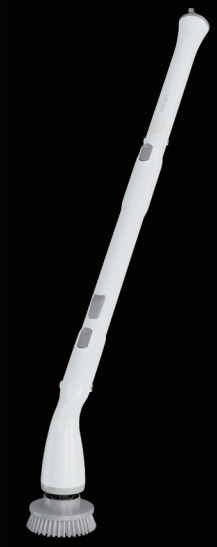


HiCOZY

USER MANUAL

ELECTRIC SPIN SCRUBBER

HS1



VERSION: 1.2

CATALOG

INTRODUCTION	03
WARNING	04
PACKAGE INCLUDES	07
INSTRUCTIONS	08
DIMENSIONS	08
PREPARATION	09
USAGE INSTRUCTIONS	14
MAINTENANCE	16
SPECIFICATIONS	17
TROUBLESHOOTING	17
WARRANTY PERIOD	19

INTRODUCTION

This product is designed for household and bathroom cleaning. This scrubber makes it easy to clean hard-to-reach corners like bathtub, sink, and more without excessive bending or reaching. We hope you like your new electric spin scrubber!

Thank you again for choosing HiCOZY. Questions or concerns? You are welcome to contact us via support@hicozy.com.



Please fully read and understand this manual before using and keep this manual for future reference.

WARNING

SAFETY WARNING

- Due to shipping requirements, the product will arrive with a low battery. Please fully charge it before the first use.
- When scrubbing stains, back splattering may occur. Take precautions to ensure the splatter does not contact your eyes or skin.
- The indicator will flash in red when the battery level is too low, please charge it as soon as possible.
- The indicator will illuminate red when it is charging.

If the indicator does not illuminate red, please check if the power cord is inserted correctly, then check the indicator.

- Please plug the silicone charging cover back after charging to avoid the intrusion of water.
- Please ensure all the accessories are included in the package after receiving the product.
- Please ensure the brushes are correctly installed before use.
- The brush may scratch surfaces made of stainless steel, polishing resin, artificial marble and wood. Before cleaning any of these surfaces with this scrubber, try it on a small area first.
- Let the product rest for at least 10 minutes after 30 minutes of continuous operation.
- The brushes are consumables, so they are excluded from the warranty.
- Keep the charging cable and your hands dry while charging to avoid any damage or injury.
- Please do not personally disassemble, repair or modify any of the components. Please contact us if there are any quality issues.

- Please wear appropriate eye protection and rubber gloves when cleaning irritating substances.
- Please turn the product off before replacing any accessories.
- Keep all body parts, including hair and clothes, away from the brushes to avoid tangling.

SAFETY INFORMATION

Note: Please practice the safety precautions outlined below when using this product:

- The product is not a toy. Close supervision is required when children are near the product.
- Keep out of reach of children.
- Do not burn the battery, it may explode in the fire.
- Do not charge the product in a humid or moist environment.
- To achieve better performance, do not charge the product at a temperature below 40 °F (5 °C) or higher than 105 °F (40 °C).
- If the charging cable/plug is damaged or broken, please replace it with a qualified charging cable.
- Do not use the charging cable improperly. Do NOT use the charging cable to lift the product or violently unplug it.
- Do not store or use the product close to any heat sources.

SAFETY ALERT

- This appliance can be used by children older than 8 years as well as persons with reduced physical, sensory or mental capabilities or lack of experience and knowledge, ONLY if they have been given proper supervision or instruction concerning use of the appliance. Children shall not play with the appliance. Cleaning and maintenance shall not be performed by children without supervision.

- This appliance is not intended for use by persons (including children) with reduced physical, sensory or mental capabilities, or lack of experience and knowledge unless they have been given supervision or instruction concerning use of the appliance by a person responsible for their safety. Children should be supervised to ensure that they do not play with the appliance.

FCC STATEMENT

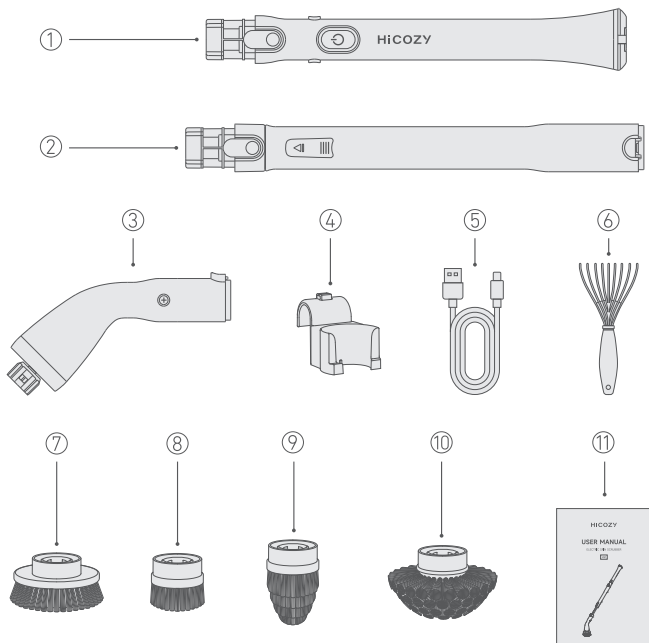
Operation is subject to obey the below conditions.

1. This device may not cause harmful interference.
2. This device must accept any interference received, including interference that may cause undesired operation.

Note: This equipment has been tested and found to comply with the limits for a Class B digital device, pursuant to part 15 of the FCC Rules. These limits are designed to provide reasonable protection against harmful interference in a residential installation. This equipment generates, uses and can radiate radio frequency energy and, if not installed and used in accordance with the instructions may cause harmful interference to radio communications. However, there is no guarantee that interference will not occur in a particular installation. If this equipment does cause harmful interference to radio or television reception, which can be determined by turning the equipment off and on, the user is encouraged to try to correct the interference by one or more of the following measures.

- Reorient or relocate the receiving antenna.
- Increase the separation between the equipment and receiver.
- Connect the equipment to an outlet on a circuit different from that to which the receiver is connected.
- Consult the dealer or an experienced radio/TV technician for help.

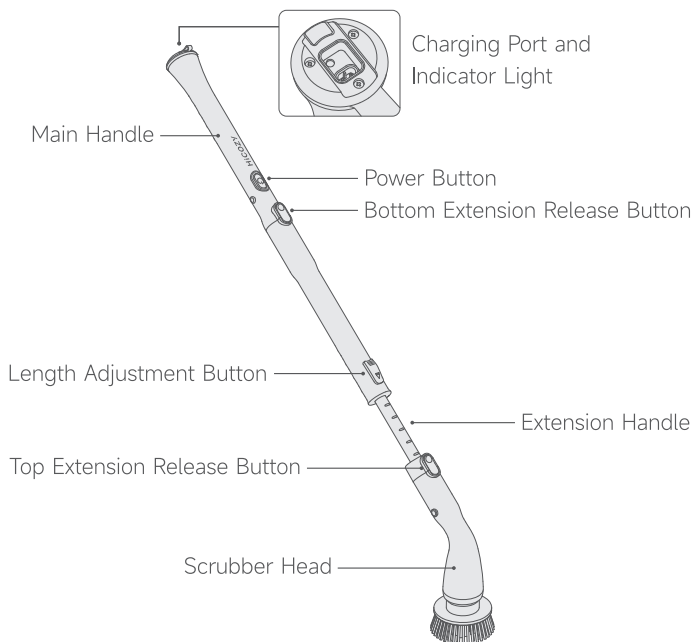
PACKAGE INCLUDES



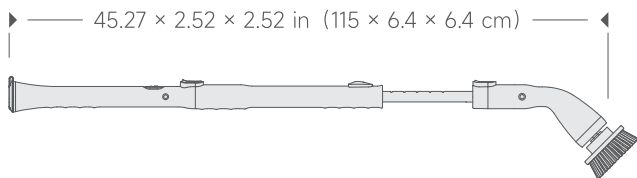
- ① Main Handle
- ② Extension Handle
- ③ Scrubber Head
- ④ Hanging Hook
- ⑤ Type-C Charging Cable
- ⑥ Hair Comb

- ⑦ Large Flat Brush
- ⑧ Small Flat Brush
- ⑨ Corner Brush
- ⑩ Dome Brush
- ⑪ User Manual

INSTRUCTIONS



DIMENSIONS



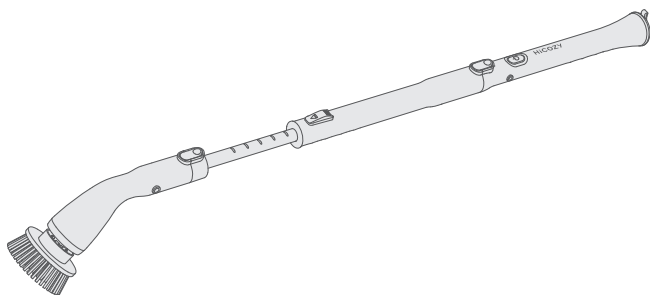
PREPARATION

INSTALLATION INSTRUCTIONS

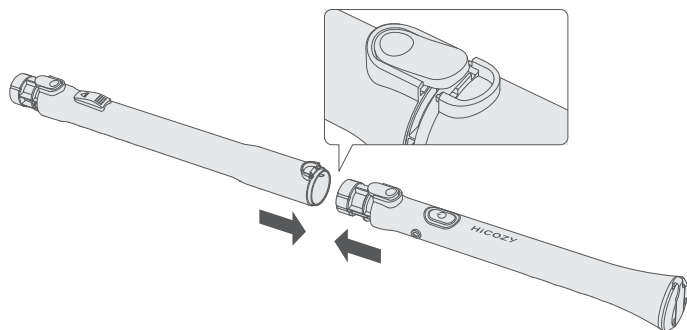
Note: Before assembling any component of this product, make sure the device is turned off.

Assemble with Extendable Handle

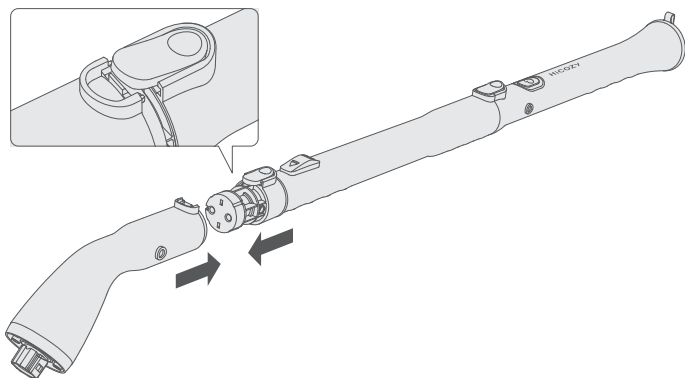
Completed Assembly as shown in the picture.



1. Connect the Main Handle to the Extendable Handle until you hear a "CLICK" sound.

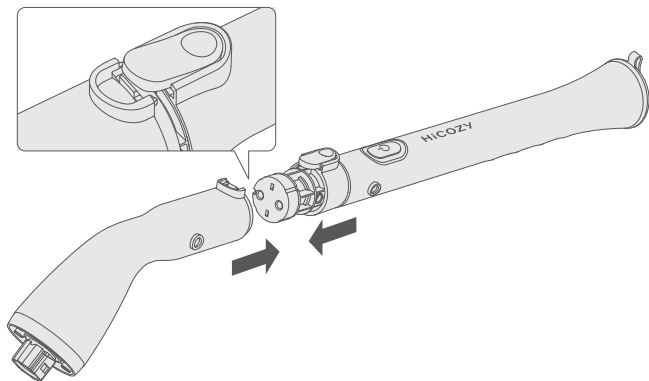


2. Next, connect the Scrubber Head to the Extendable Handle until you hear a "CLICK" sound.



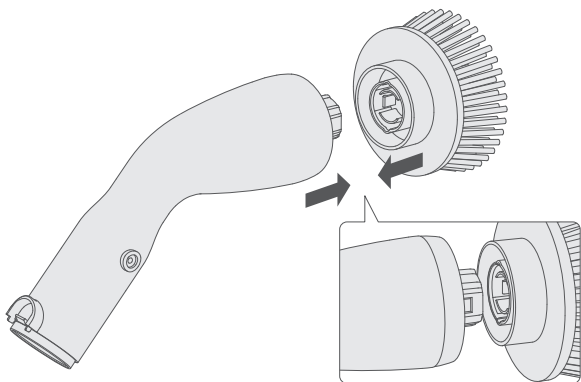
Assemble without Extendable Handle

Connect the Main Handle to the Scrubber Head until you hear a "CLICK" sound. Note the following diagram.



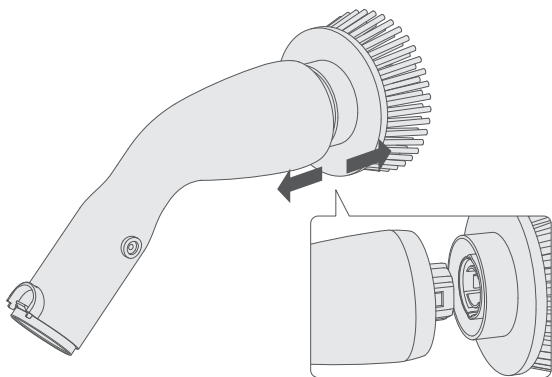
Brush Head Assembly

Push the selected brush on until securely fastened. Firmly hold the scrubber head with one hand and then press the two pieces together.



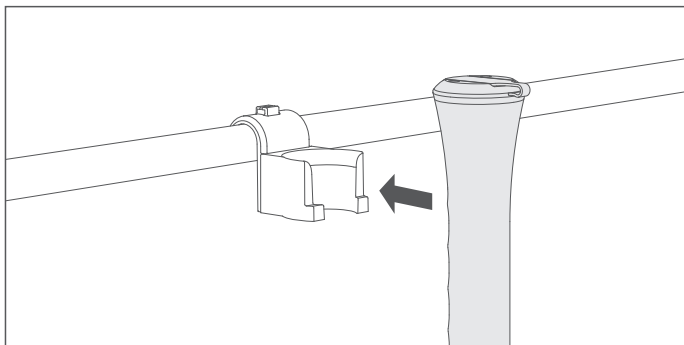
How to Pull Out the Brush Head

Hold the connection part of the brush head and pull it out vertically.



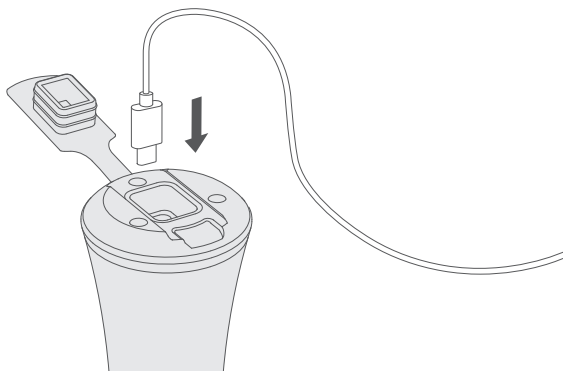
How to Use the Hanging Hook

You can install the hook onto a bar or rod to hang the electric spin scrubber.







How to Charge

Open the silicone charging cover and insert the charging cable. Then, plug the charger head into the electrical outlet. (Please fully charge the product before first use).

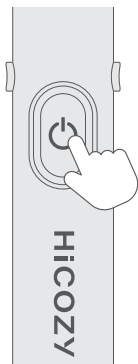


LED INDICATOR

	Light	State
	Red Light	Charging
	Green Light	Fully Charged/Working
	Slow Flash	Low Battery Protection
	Quick Flash	Locked-Rotor Protection

Reminder: Due to factory testing, the product's battery will not be full upon arrival. When the indicator light flashes slowly, please charge it as soon as possible. It will work functionally after being fully charged.

USAGE INSTRUCTIONS



POWER BUTTON

Press the Power Button once to turn on the first gear (speed of 300 rpm), the indicator light will turn green.

Press the Power Button for a second time to turn on the second gear (speed of 400 rpm), the indicator light will turn green.

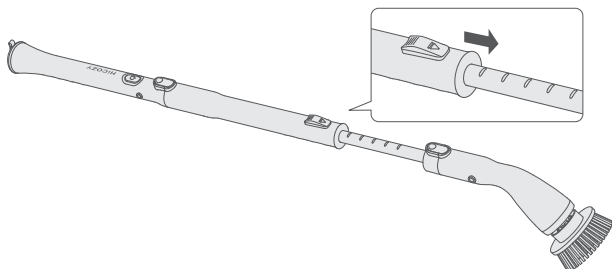
Press the Power Button for a third time to turn off the scrubber, the indicator will turn off.

If the battery power is too low, it will automatically turn off.

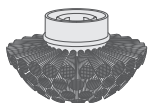
Note: Do not continuously use for more than 30 minutes. Prolonged use will cause the scrubber to automatically turn off for circuit protection. When it is locked, please restart the device and allow it to rest for at least 10 minutes before resuming use.

EXTENSION ROD OPERATION

Push the Length Adjustment Button in the direction indicated by the arrow on it. Then, pull the handle to extend it; you can adjust the length as needed with the five adjustment snaps.

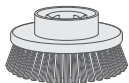


ACCESSORIES USAGES



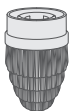
Dome Brush

The round brush is a concave cleaning brush good for cleaning showers, tubs, bathtubs, sinks, baseboards or toilets.



Large Flat Brush

The large flat brush is used to clean large flat surface areas, like hard floors, tiles, walls, doors, windows, glass, counters, patio furniture, pools, soap scum, grime, stoves, carpet and ceramic surfaces.



Corner Brush

The corner brush is great for cleaning tile grout, edges, corners and tight places.



Small Flat Brush

The small flat brush is ideal for cleaning smaller areas such as showers, kitchens, soap scum, grime, grease, stoves, grills, counters and doors.

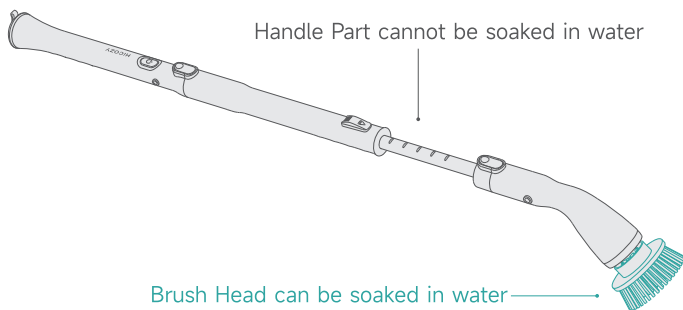
Tip: If you want to buy more replacement brush heads, please search "HiCOZY Replacement Brush Head" on Amazon.

MAINTENANCE

HOW TO CLEAN THE PRODUCT

Handle Part: Gently wipe the handle part of the scrubber with a wrung soft cloth.

Brush Head: Disassemble the brush head and immerse it into water to clean. Clean it with neutral detergent if it is difficult to clean.



Cleaning Note

- For better cleaning, it is recommended to use the brush with a detergent (such as Mold & Mildew Remover, Water Stain Remover, Oven Cleaner, Bleach Cleaner, All-Purpose Cleaner, ect.). Use different detergents for different needs.
- For removing stubborn stains, please soak stains in water and detergent for a while (10 minutes or longer), and then use the scrubber to clean, it will shorten your cleaning time.

Storage Note: Store the scrubber in a ventilated and cool place. Avoid placing it in a wet place or being exposed to strong sunlight.

SPECIFICATIONS

Product	Cordless Power Scrubber
Model	KS-2615P
Battery Capacity	2500 mAh
Battery Type	Li-ion Battery
Voltage	DC 7.4 V
Rotation	300-400 RPM
Charging Time	3-3.5 Hours
Running Time	120 Min
Noise	<70 dB
Charger Output	Standard Charging 5 V = 2 A

TROUBLESHOOTING

THE RED INDICATOR WILL NOT LIGHT UP WHEN CHARGING

- Check if the socket is powered or if there is a power blockage.
- If the indicator turns green after powering, this indicates the product is fully charged. Press the Power Button to start.

THE INDICATOR STAYS RED AFTER 4 HOURS OR MORE OF CHARGING

- Please check if the connection between the socket and product is secure. Secure it before charging.
- If water enters the product during operation, it will damage the interior circuit and lead to abnormal charging.
- Please contact HiCOZY Customer Service if other issues appear.

THE BRUSH STOPS ROTATING WHEN WORKING

- If the red indicator flashes for 30 seconds and then stops, the user may be pressing too hard on the brush; the brush automatically stops due to its protection system.
- Press the Power Button once or twice to restart the device.
If the red indicator keeps flashing, it is indicating a low battery. Use the device after fully charging it.
- If the product stops rotating after spinning less than 10 seconds, or the spin does not resume after pressing the Power Button twice. Please contact HiCOZY Customer Service via email.

THE INDICATOR IS GREEN (FULLY CHARGED), BUT THE BRUSH DOES NOT SPIN

- Please check if the brush is connected tightly to the extension rod and handle. For installation instructions, please check the installation instruction part of this manual.
- If all the connections are connected well and the device has not been soaked in water before; but the brush does not spin after turning on or the brush stops spinning when the user applies gentle force, please contact HiCOZY Customer Service via email.

THE BRUSH HEAD SPINS FOR LESS THAN 120 MINUTES OR DOES NOT WORK AFTER PRESSING THE POWER BUTTON TWICE WHEN THE BATTERY IS FULLY CHARGED

Users may apply different downforce during the operation. If you keep pressing the brushes too hard, the operation time will be shorter than 120 minutes. To extend its service life, please do not press the brushes too hard, or the frequent hard-pressing will damage the brushes.

WARRANTY PERIOD

1-YEAR LIMITED WARRANTY FROM HiCOZY

For the Period of:

One year from the date of the original purchase.

Warranty Covers:

If the electric spin scrubber fails due to a defect in materials or workmanship, during the limited one-year warranty, HiCOZY will either replace your product with a new product or refund the purchase price of the product at HiCOZY's sole discretion.

What HiCOZY Will Not Cover

- Service trips to your home.
- Improper maintenance.
- Incidental or consequential damage caused by possible defects with this appliance.
- Labor and other charges to install and/or remove the product.
- The normal consumption of brushes.

Each HiCOZY Electric Spin Scrubber will be free from defects in material and workmanship. This warranty does not cover damage from neglect, misuse, contamination, alteration, accident, or abnormal conditions of operation or handling. This warranty covers the original purchaser only and is not transferable.

HiCOZY always wants to provide our customers with excellent products and customer service.

Questions or concerns? We're happy to help!

Please contact us via support@hicozy.com.

HiCOZY