



## Snow Brush User Manual



-V0.1-



Web:www.astroai.com  
E-mail:support@astroai.com

Thank you for purchasing the Snow Brush from AstroAI. In order to ensure the best performance and safety, please read and follow the instructions before use and keep the instructions for future reference. We hope you enjoy your new snow brushes. For any help and support from our customer service team, please contact us via support@astroai.com. Thank you again.

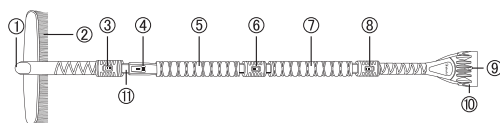
### WARNING ///

- Read the instructions carefully before using the product.
- Place the product in a dry place and avoid direct sunlight.
- Keep the product away from fire, corrosive liquids and strong acids.
- Do not pull the bristles to prevent them from dropping out.
- Do not put heavy objects on the product to prevent bending and deformation.
- Do not use the product for anything but its purpose.

Issues may occur during transportation. If you encounter the following problems, please contact our support team:

- The connector is damaged and the snow brush and snow scraper cannot be assembled.
- The parts cannot be connected together or are loose.
- The snow brush has broken bristles or the grip is broken.

### DIAGRAM ///

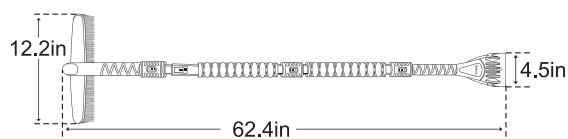


- |                            |                                     |
|----------------------------|-------------------------------------|
| ① Angle Adjustment Button  | ⑦ Grip 2                            |
| ② Snow Brush               | ⑧ Button                            |
| ③ Button                   | ⑨ Hook Hole                         |
| ④ Length Adjustment Button | ⑩ C-shaped Ice Scraper              |
| ⑤ Grip 1                   | ⑪ Multi-limit Length Adjustment Rod |
| ⑥ Button                   |                                     |

-2-

-3-

### DIMENSIONS ///



### FEATURES ///

#### • SNOW BRUSH

The snow brush is made with brand new high-strength ABS plastic and PVC filaments combined with a sophisticated button. The snow brush can rotate 360 degrees. The low-temperature resistant PVC bristles will not freeze or harden even at minus 40°C, so they won't scratch the glass and car paint.

#### • ICE SCRAPER

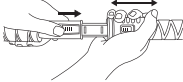
The ice scraper is made of new high-strength PC plastic. The C-shaped ice scraper has deeper grooves, which can break the ice more effectively and efficiently. The high width scraper and low temperature resistant materials provide easy and practical ice-breaking and snow removal.

#### • GRIP

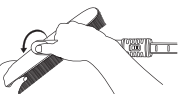
The grip is made of brand new high-strength ABS plastic and high-strength triangular aluminum alloy. It is also equipped with a soft and elastic EVA sponge, which allows for a more comfortably use. The smooth, multi-position aluminum alloy tie rod increases the maximum working radius (62.4 inches). The length can be switched flexibly according to your needs.

-4-

- Push and hold the length adjustment button with your thumb, while holding the other end to slide it. Release the pressed length adjustment button upon reaching the desired position.

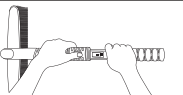


- Press and hold the angle adjustment button, rotate the snow brush head, and release the button when you reach the desired position.

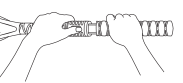


#### • DISASSEMBLY

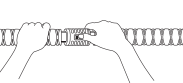
- Depress the snow brush buckle button and pull out the grip with the other hand.



- Depress the ice scraper buckle button and pull out the grip with the other hand.



- Depress the grip buckle button and pull out the grip with the other hand.



-6-

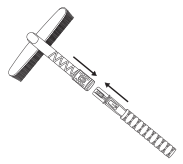
#### • SPLIT DESIGN

When the snow brush and scraper are separated, they can both operate independently. The joint blade is made of one-piece high-strength plastic, which can be used thousands of times. Suitable for cars, electric vehicles, motorcycles and bicycles, but also for cleaning snow on roofs, windows, and doors: After finishing just disassemble and store in a storage bag.

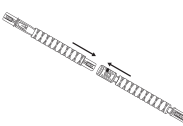
### ASSEMBLY AND DISASSEMBLY STEPS ///

#### • ASSEMBLY

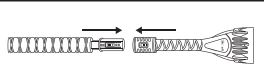
- Align the grip with the snow brush and push in the buckle. Pay attention to the side of the grip with the length adjustment button, which is the direction in which the grip and the snow brush are properly buckled.



- Align the non-button end of the grip 1 with the female connector of grip 2 and push in the buckle. (Grip 2 is not a necessary accessory and you can add it as needed.)



- Align the male connector of grip 2 with the ice scraper and push in the buckle.



-5-

### TROUBLESHOOTING ///

The buckle cannot be connected	• Make sure the buckle is stuck with the grip.
Ice on the Bristles	• Make sure the environment of use is dry, cold and liquid-free.
Deformed Bristles	• Make sure that nothing is pressing heavily on the product.
The grip of the snow brush end cannot be extended.	• Check to see if you have assembled as per the user manual. Assemble the parts in the correct order.

### 1 YEAR LIMITED WARRANTY FROM ASTROAI ///

Each AstroAI Snow Brush will be free from defects in its material and works. This warranty does not cover fuses or damage from neglect, misuse, contamination, alteration, accident, or abnormal conditions of usage or handling. This warranty covers the original purchaser only and is not transferable. AstroAI always wants to provide our customers with excellent products as well as service. To know more about us, please visit astroai.com

-7-